

ACHT 100



001

M.F. WIEN

ADOLF HOCHMEISTER



001

A020

AG



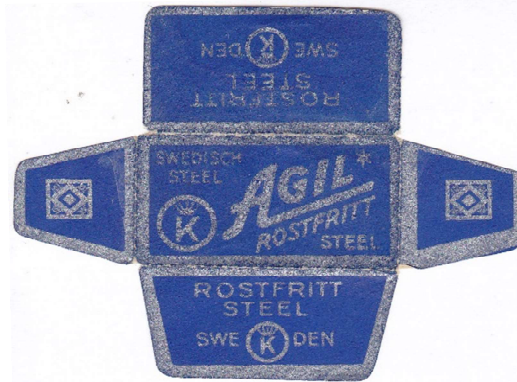
001

AG



002

AGIL



001

AGLO



001

A040



AUSTRIA? (NOT SWEDEN !)

AGLO



002

AKAPA



001

AKAPA

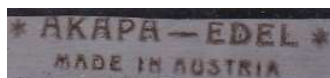


002

AKAPA



003



ALBERTO



001

A070

ALBERTO



002

A073

ALBERTO



POLAND

ALBERTO



POLAND

ALBERTO



003

A063

ALBERTO



004

A060

ALBRECHT



001

MAY BE ROTBART?

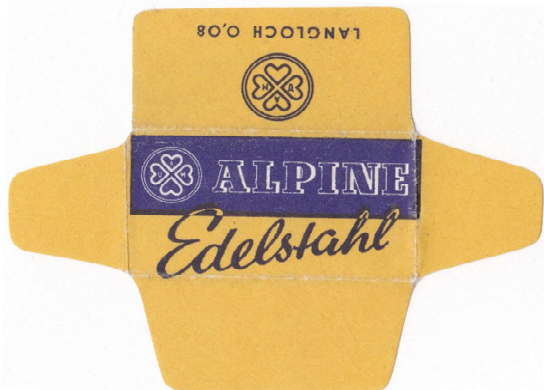
ALPEN



001

M.F. WIEN

ALPINE

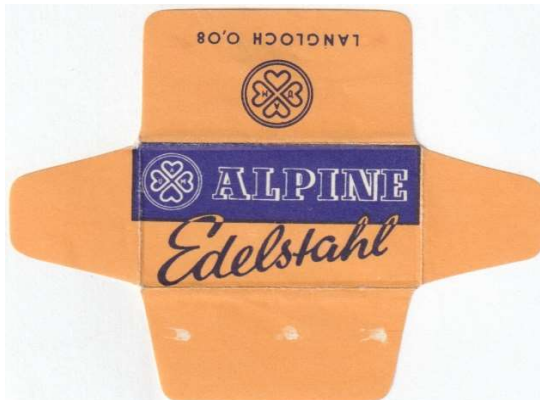


001

A090

OAM

ALPINE



001A

OAM

ALPINE

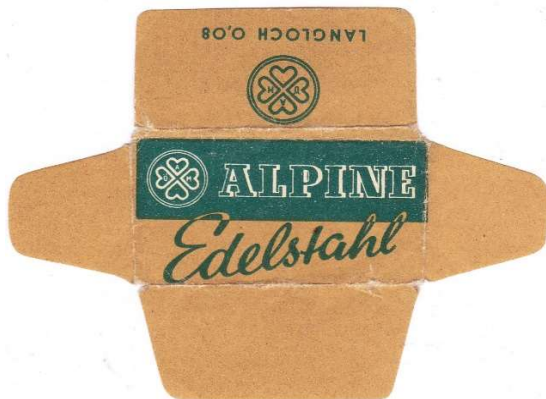


002

A093

OAM

ALPINE



003

OAM

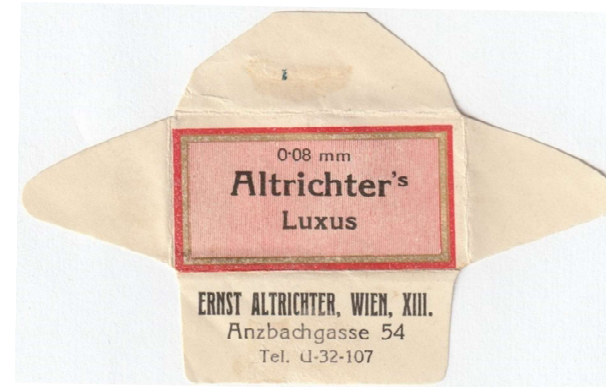
ALPINE



004

OAM

ALTRICHTER'S



001

FRAWECO

AMERICAN CLUB



001

ANDA



001

ANDA



002

W165

W.U.K.

W.U.K.

ANKER



001

ARGUS



001

ARLBERG



001

A110



JLFE

ASKULAP



ASTRA



ASTRA



001

002

RIVO AUSTRIA

RIVO AUSTRIA

ATOS



AUSTRIA



AUTOBLADE



001

001

A150

001

MEM

SULA

M.E. MAYER

**AUTOBLADE**



002

MEM (OCCUPATION)

**AUWERK**



001

A170

**AUWERK**



002

A180

AUWERK

**AUWERK**



003

A190

AUWERK

**AUWERK**



004

AUWERK

**AUWERK**



005

A193

AUWERK

AUWERK



006

A200

AUWERK

AUWERK



007

A210

AUWERK

AUWERK



008

A213

AUWERK

AUWERK

AZET



776

776 Factory number in III REICH time



FOR WEHRMACHT  
("FELDGRAU")



001