

"280"



EDGED

001

export to Cuba

"280"



EDGED

002

export to Cuba

"280"



BOX

export to Cuba

"280"



USA

export to Cuba before Castro rebellion

77



001

AUSLESE



001



AUSLESE

like 001 - reverse pattern

002

AUSLESE



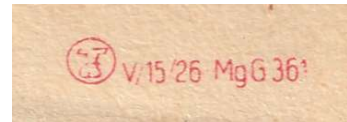
003

AUSLESE

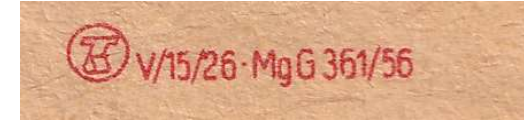


004

/56



/56



AUSLESE



005

AUSLESE

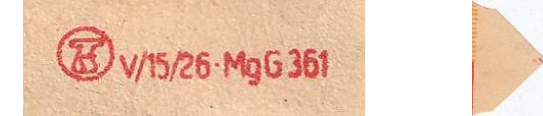
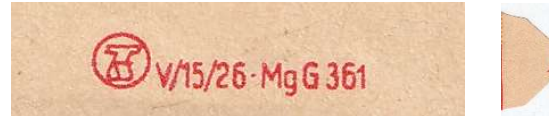


006

AUSLESE



007



AUSLESE



005

AUSLESE

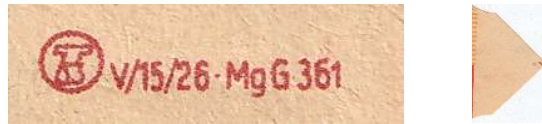


006

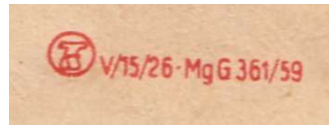
AUSLESE



007



/59



/62



AUSLESE



008

CROMA



001

CROMA



002

/63



/76



/76



CROMA



003

CROMA



004 361/76

CROMA



004 361/

DERBY



001



DERBY

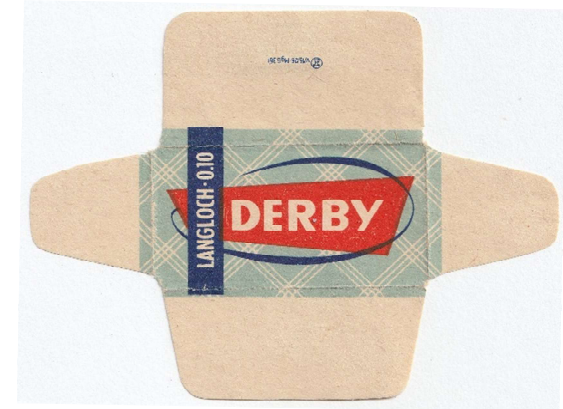


002

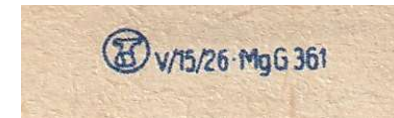


361/56

DERBY



003



361

DERBY



004

DERBY



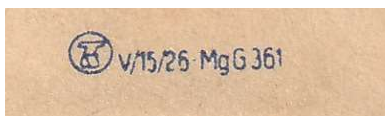
005

DERBY

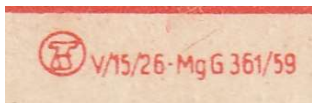


006

361



DOXA



BOX with blades without wrappers

Durato



001

11/1949



Durato



002



Durato



003

INFO

Durato Fabrik was first in Czech in Sudety. After German annexation of Sudetenland was moved to German area. After place changing was produced blades "Asra" and "Magnetic", with number 789. After 1945 was produced Duranto and Magnetic

Durato



CZECHOSLOVAKIA before 1938

/61



Production in GDR:
Magnetic: 1945-1958, Duranto 1951-1959

Durato



CZECHOSLOVAKIA before 1938

Durato



GERMANY before 1945

Solingen number 789

Durato



GERMANY before 1945

Solingen number 789

ERFA



001

ERFA

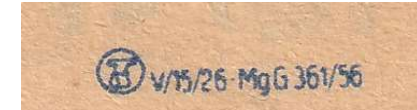
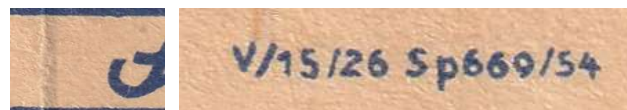


002

ERFA



003



ERFA



004

ERFA



004-A

ERFA



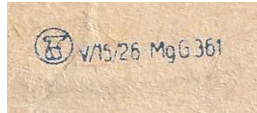
005



ERFA



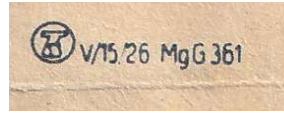
006



ERFA



007



ERFA



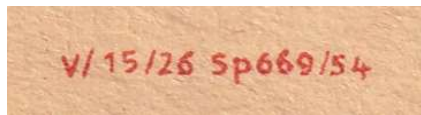
008



ERFA

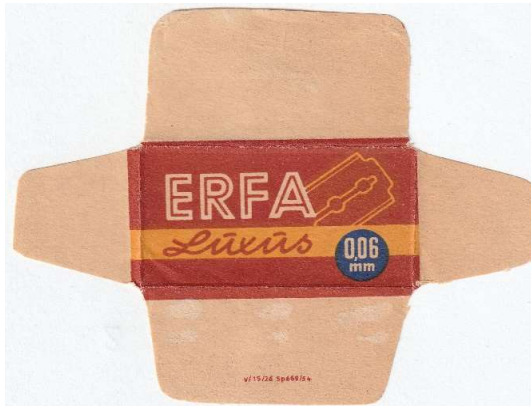


009



/54

ERFA



009-A

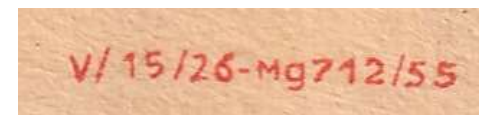


/54

ERFA



010



/55

ERFA



011



ERFA



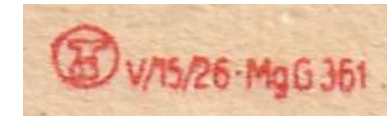
012



ERFA



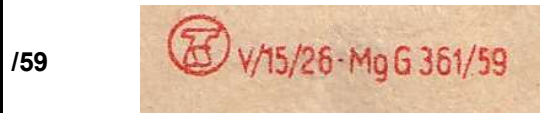
013



ERFA



014



ERFA



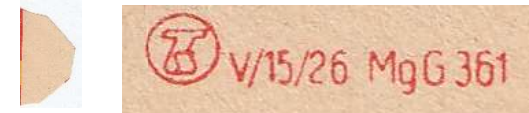
015



ERFA



016



ERFA



017



ERFA



018



ERFA



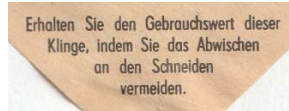
019



ERFA



020



ERFA



021



ERFA



022

/70



ERFA



023

/71

V15/26 Mg-G 361/71  VEB ERNST THALMANN

ERFA



024

V15/26 Mg-G 361  VEB ERNST THALMANN

GARANT



001

GARANT



002


/56

 V15/26 - MgG 361/56

GARANT



003

 V15/26 - MgG 361

GARANT



004

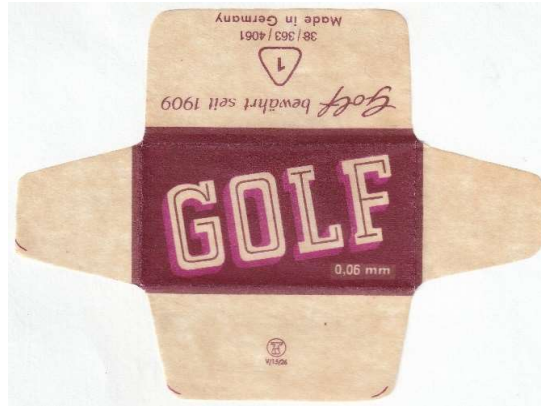
/58

 V15/26 - MgG 361/58

GOLF

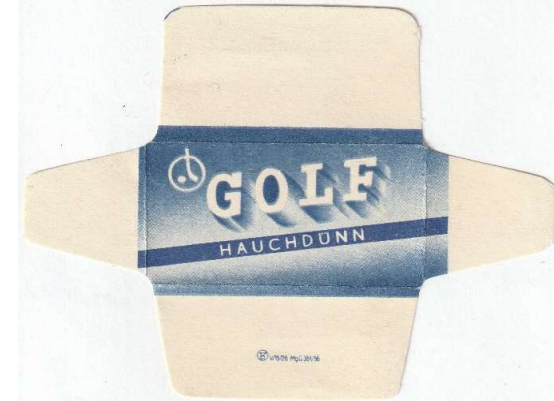
Golf was one of oldest razor blades factories in Germany (from 1909). After 1945 blades was some time produced in old wrappers..

GOLF



001

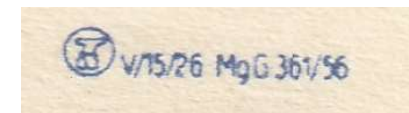
GOLF



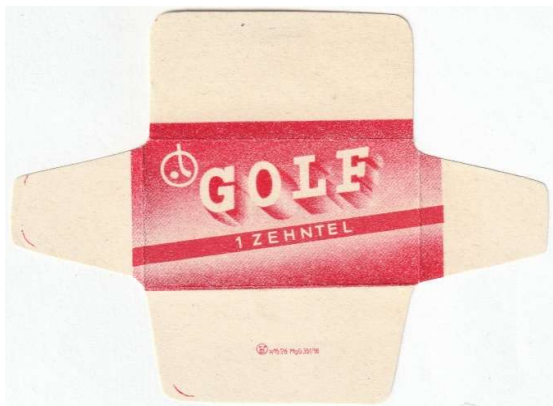
002



probably years 1951-55



GOLF



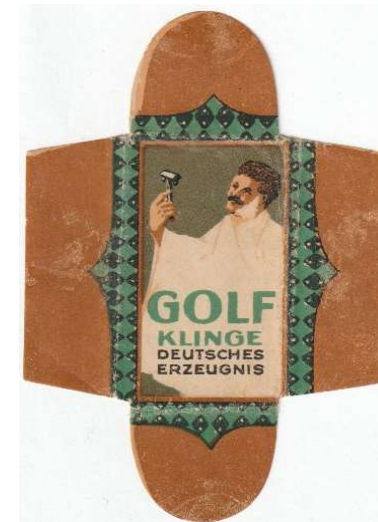
003

GOLF



004

GOLF



GERMANY before 1922

