

"280"



EDGED

001

export to Cuba

"280"



EDGED

002

export to Cuba

"280"



BOX

export to Cuba

"280"



USA

export to Cuba before Castro rebellion

77



001

AUSLESE



001



AUSLESE

like 001 - reverse pattern

002

AUSLESE



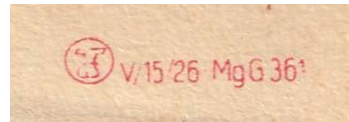
003

AUSLESE

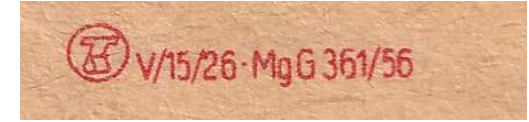


004

/56



/56



AUSLESE



005

AUSLESE

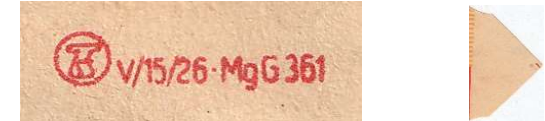
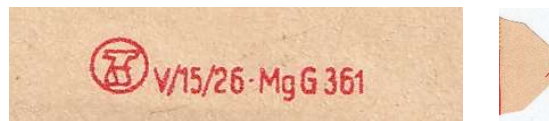


006

AUSLESE



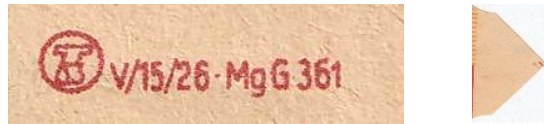
007



AUSLESE



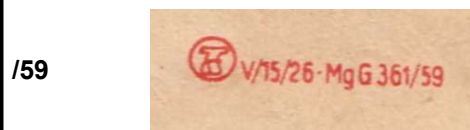
005



AUSLESE



006



AUSLESE



007



AUSLESE



008



AUSLESE



009



CROMA



001



CROMA



002



176

CROMA



003

CROMA



004 361/76

CROMA



004 361/

DERBY



001

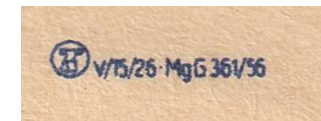


DERBY



002

361/56



DERBY



003

DERBY



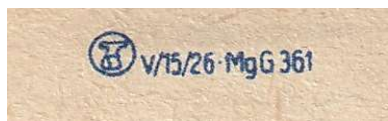
004

DERBY

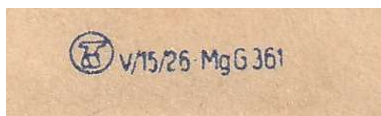


005

361



361

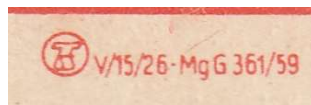


DERBY



006

DOXA



BOX with blades without wrappers

Durato



001

11/1949



Durato



002

Durato



003

INFO

Durato Fabrik was first in Czech in Sudety. After German annexation of Sudetenland was moved to German area. After place changing was produced blades "Asra" and "Magnetic", with number 789. After 1945 was produced Duranto and Magnetic



/61



Production in GDR:
Magnetic: 1945-1958, Duranto 1951-1959

Durato



CZECHOSLOVAKIA before 1938

Durato



CZECHOSLOVAKIA before 1938

Durato



GERMANY before 1945

Solingen number 789

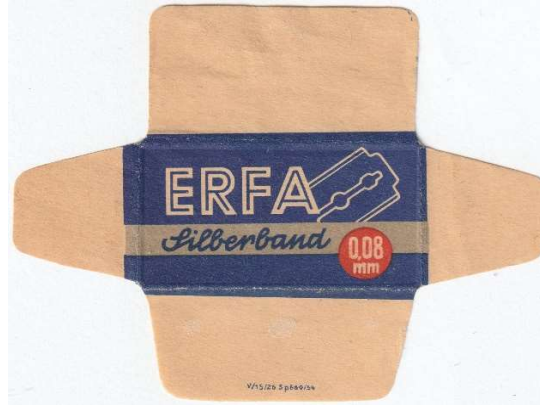
Durato



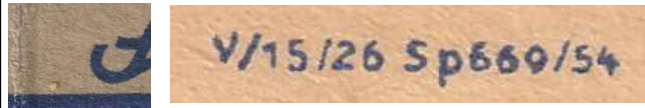
GERMANY before 1945

Solingen number 789

ERFA



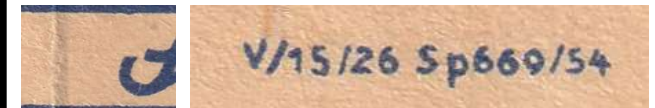
001



ERFA



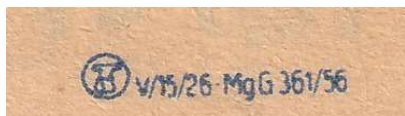
002



ERFA



003



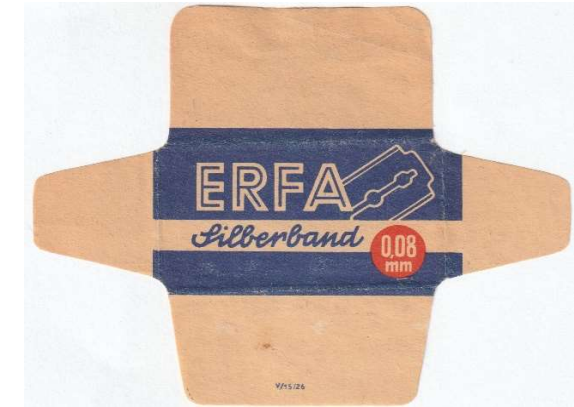
ERFA



004



ERFA



004-A



ERFA



005

ERFA

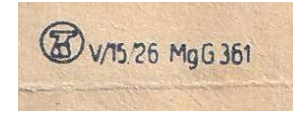
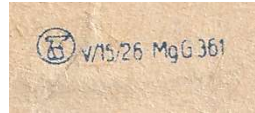


006

ERFA



007



ERFA



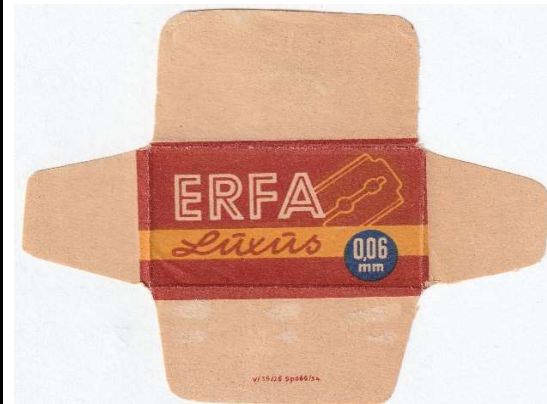
008

ERFA



009

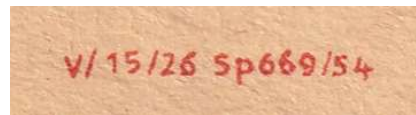
ERFA



009-A



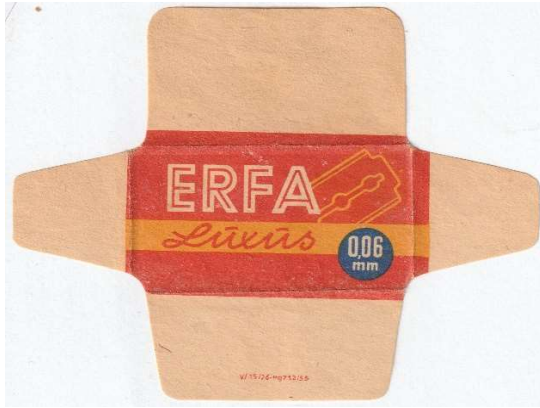
/54



/54

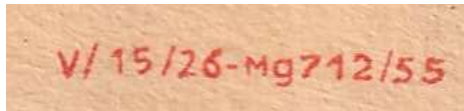


ERFA



010

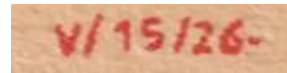
/55



ERFA



011



ERFA



012

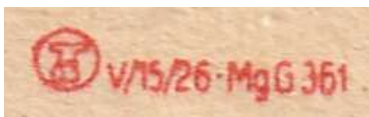
/56



ERFA



013

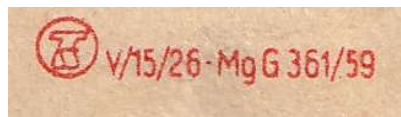


ERFA

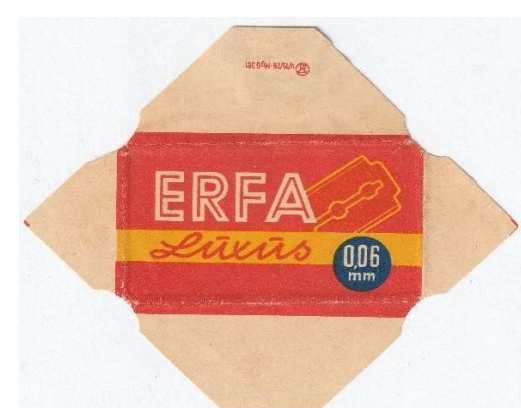


014

/59



ERFA



015



ERFA



016

ERFA

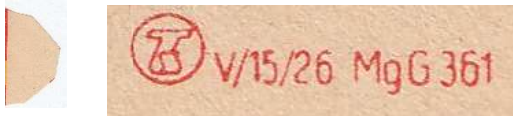


017

ERFA



018



ERFA



019

ERFA

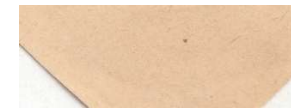
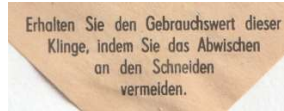


020

ERFA



021



ERFA



022

/70

V115/26 Mg-G 361/70  VEB ERNST THALMANN

ERFA



023

/71

V115/26 Mg-G 361/71  VEB ERNST THALMANN

ERFA



024

V115/26 Mg-G 361  VEB ERNST THALMANN

GARANT



001




GARANT



002

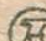
/56

 V115/26-MgG 36V56

GARANT



003

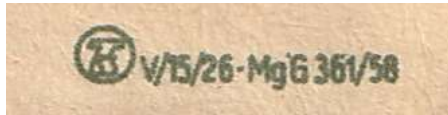
 V115/26-MgG 361

GARANT



004

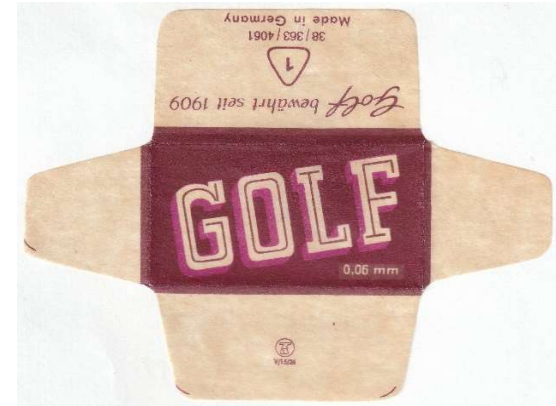
/58



GOLF

Golf was one of oldest razor blades factories in Germany (from 1909). After 1945 blades was some time produced in old wrappers..

GOLF

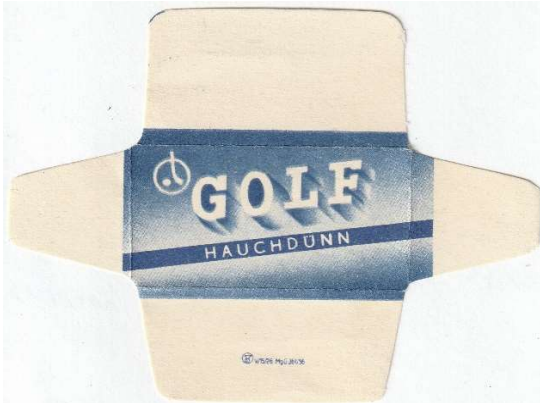


001

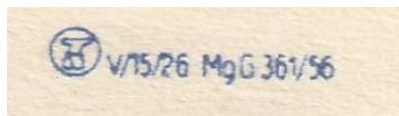


probably years 1951-55

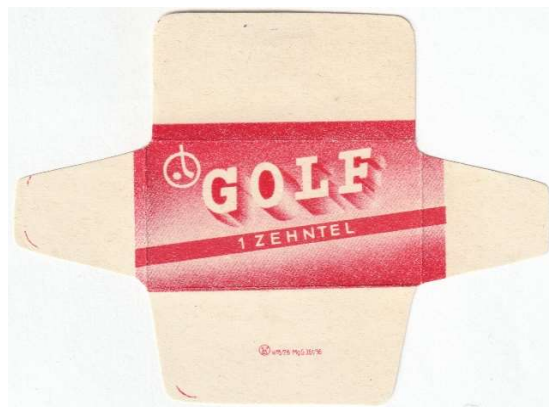
GOLF



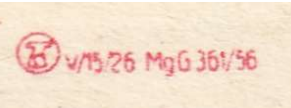
002



GOLF



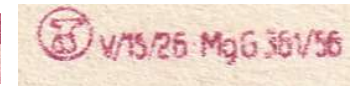
003



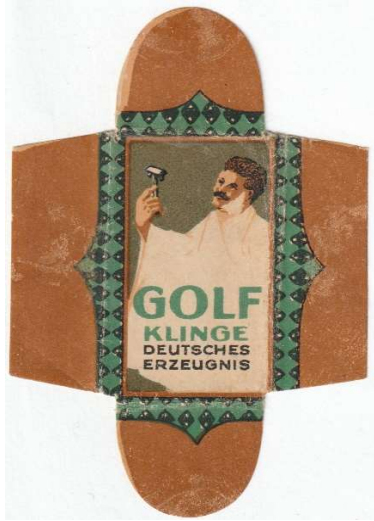
GOLF



004



GOLF



GERMANY before 1922
