

HERWI



001

Leipzig M 314 Z 7759

Ideal



001

V/15/26 Mg · G 361/56

Ideal



002

V/15/26 Mg · G 361

Ideal



003

light blue

V/15/26 MgG 361

Ideal



003-A

blue

V/15/26 · MgG 361

Ideal



004

V/15/26 MgG 361

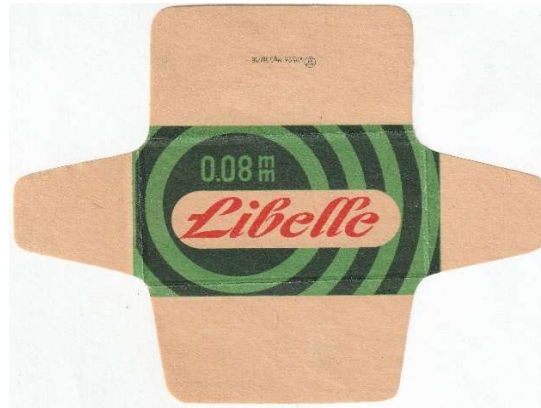
Libelle



001



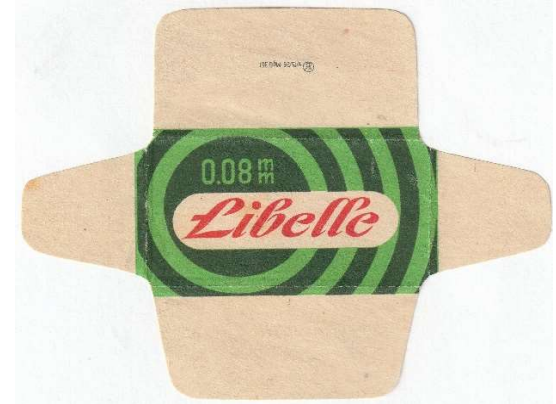
Libelle



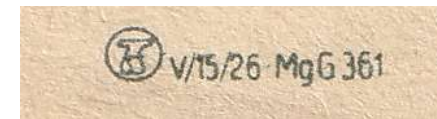
002



Libelle



003



Libelle



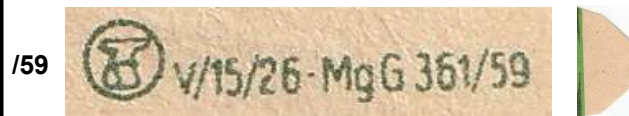
004



Libelle



005

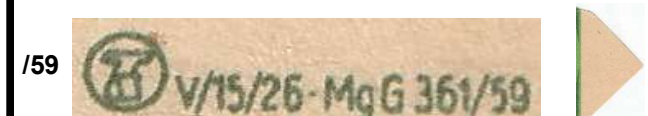


lackiert

Libelle



006



lackiert

Libelle



lackiert

007

GREEN



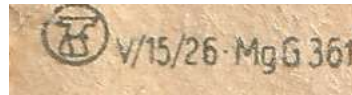
Libelle



lackiert

007-A

LIGHT GREEN

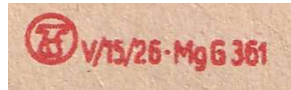


Luxor



001

Luxor



BOX from LUXOR 001

Luxor



G 27

CZECHOSLOVAKIA

most of Luxor blades (export to Africa) was produced in Czechoslovakia. Differences can be very small

MAGNETIC



001

MAGNETIC



box from Magnetic made in GDR

MAGNETIC



GERMANY before 1945

INFO

Durato Fabrik was first in Czech in Sudety. After German annexation was moved to German area. After place changing was produced blades "Asra" and "Magnetic", with number 789. After 1945 was produced Duranto and Magnetic razor blades.



789



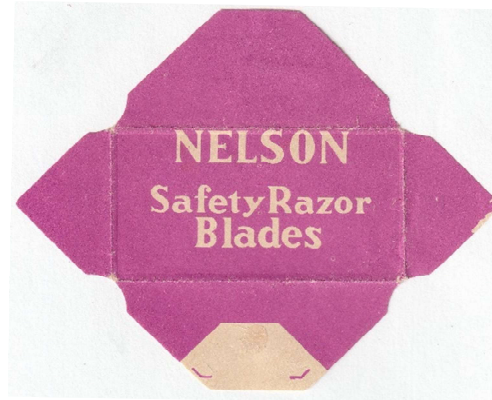
Magnetic: 1945-1958, Duranto 1951-1959

ASRA



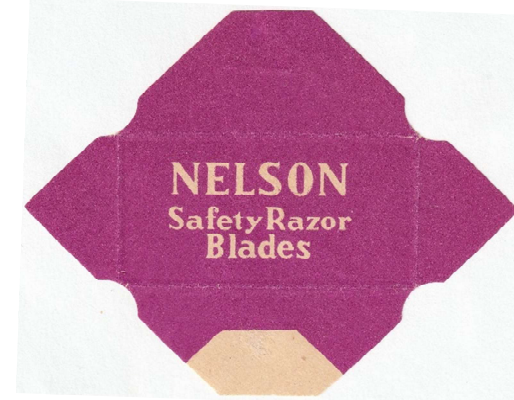
GERMANY before 1945

NELSON



001

NELSON



002

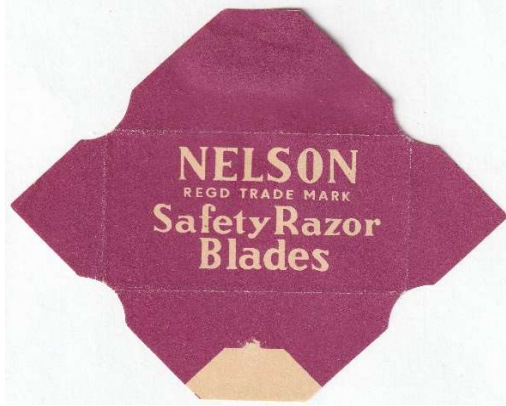
789



export to Africa

export to Africa

NELSON

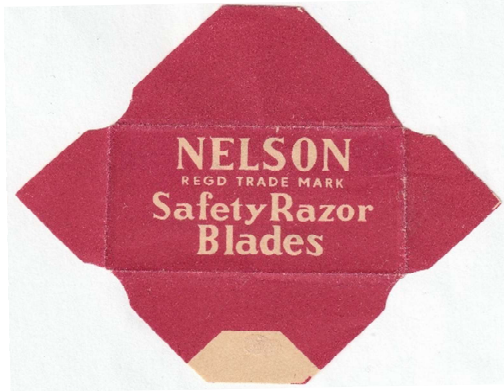


003

export to Africa

REGD TRADE MARK

NELSON



004

export to Africa

REGD TRADE MARK

NELSON



005

1427010-6973

NELSON



006

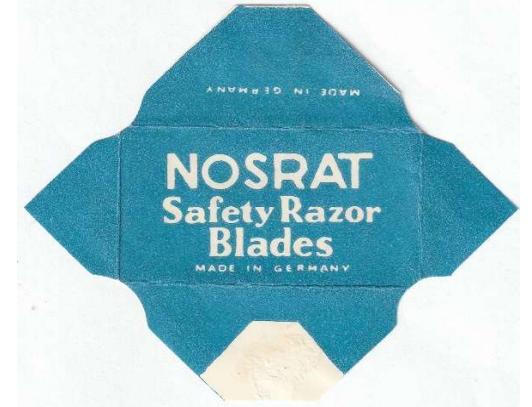
NELSON



CHINA

export to Africa

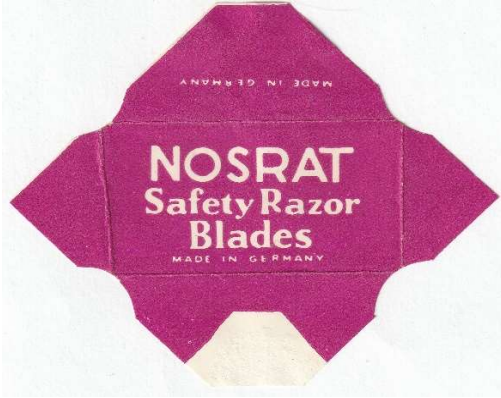
NOSRAT



001

export to Africa

NOSRAT



002

export to Africa

NOSRAT



003

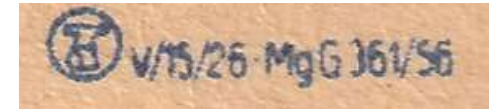
export to Africa

Olympia



001

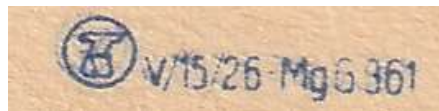
/56



Olympia



002

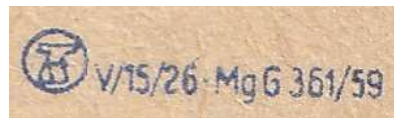


Olympia



003

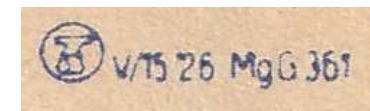
/59



Olympia



004



Olympia



005



REKORD



001

/64



REKORD



002



Spezial



001

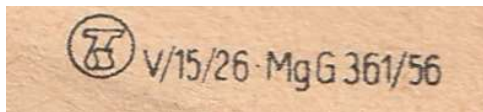


Spezial



002

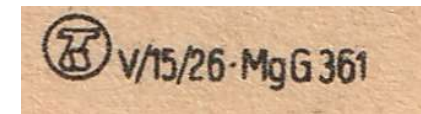
/56



Spezial



003

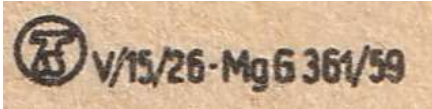


Spezial



004

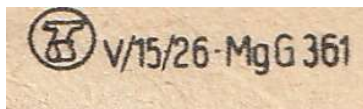
/59



Spezial



003



STABIL



1946 Ritzma (next Feintechnik Eisfeld)

Stabil



002

Feintechnik Eisfeld (before Ritzma, next Erfu)

Start



001

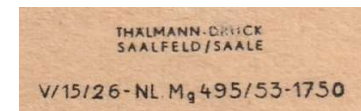
FTE= FeinTechnik Eisfeld

Start



002

/53-1750

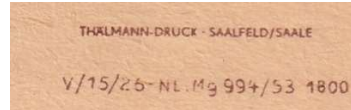


START



003

/53-1800

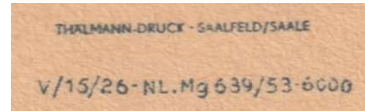


START

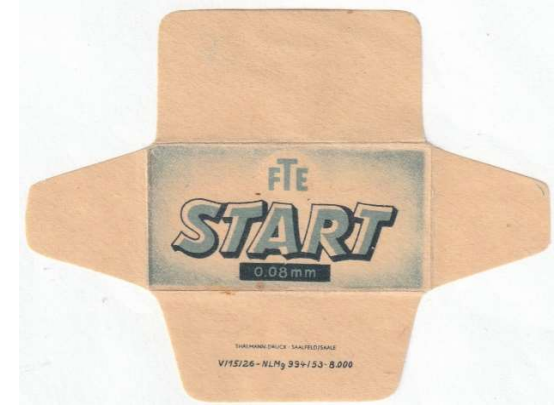


004

/53-6000

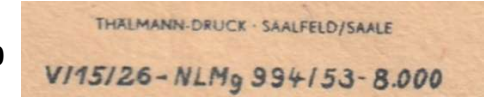


START



005

/53-8000

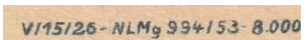


START



006

/53-8000

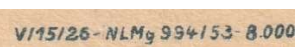


START



007

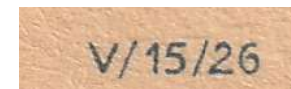
/53-8000



START



008



Stern



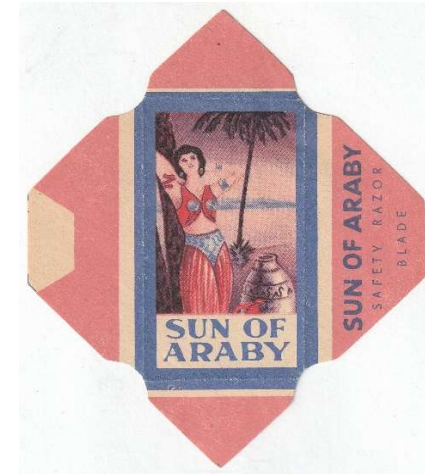
001

Stern

reverse pattern

002

SUN OF ARABY



001

export to Africa, fake of West German blades

SUN OF ARABY



WEST GERMANY export to Africa

SUN OF ARABY

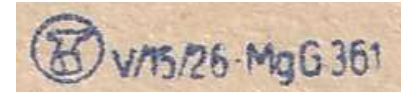


WEST GERMANY export to Africa

TATRA



BOX



TATRA



001

Probably fake . Blade from this wrapper:



TATRA



the same wrapper

in Czechoslovakian catalog under number

T 110

Blade from this wrapper - dark brown

UNIDAD POR LA PAZ



001

export to CUBA



BOX

