

"280"



EDGED

001

export to Cuba

"280"



EDGED

002

export to Cuba

"280"



BOX

export to Cuba

"280"



USA

export to Cuba before Castro rebellion

77



001

AUSLESE



001



AUSLESE

like 001 - reverse pattern

002

AUSLESE



003

AUSLESE

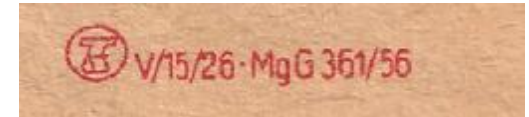


004

/56



/56



AUSLESE



005

AUSLESE

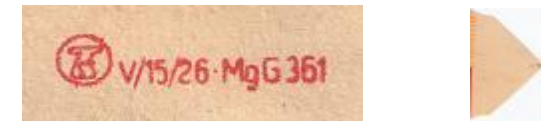
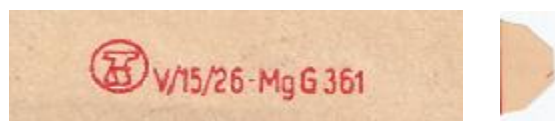


006

AUSLESE



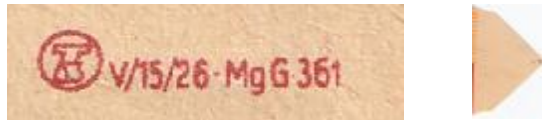
007



AUSLESE



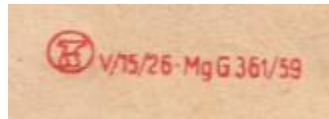
005



AUSLESE



006



AUSLESE



007



AUSLESE



008



CROMA



001



CROMA



002



/63

/76

/76

CROMA



003

CROMA



004

CROMA

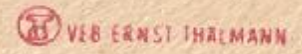


005

/76



V15/26 Mg G 36/76



DERBY



001

DERBY



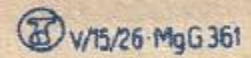
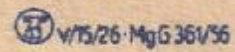
002

DERBY



003

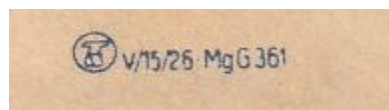
/56



DERBY



004



DERBY



005



DERBY



006

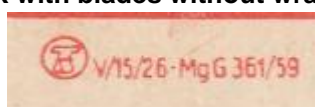


DOXA



BOX

BOX with blades without wrappers

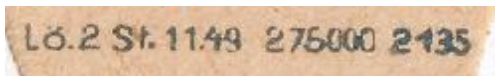


Durato



001

11/1949



Durato



002



Durato



003

INFO

Durato Fabrik was first in Czech in Sudety. After German annexation of Sudetenland was moved to German area. After place changing was produced blades "Asra" and "Magnetic", with number 789. After 1945 was produced Duranto and Magnetic

Durato



CZECHOSLOVAKIA before 1938

/61



Production in GDR:
Magnetic: 1945-1958, Duranto 1951-1959

Durato



CZECHOSLOVAKIA before 1938

Durato



GERMANY before 1945

Solingen number 789

Durato



GERMANY before 1945

Solingen number 789

ERFA



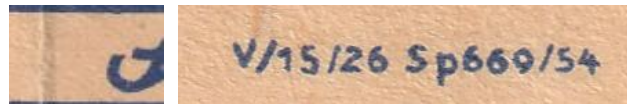
001



ERFA



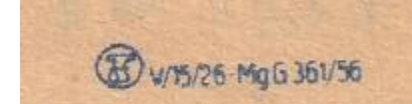
002



ERFA



003



ERFA



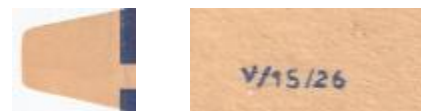
004



ERFA



004-A



ERFA

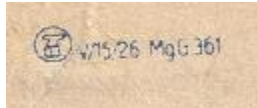


005

ERFA



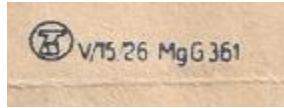
006



ERFA



007



ERFA



008

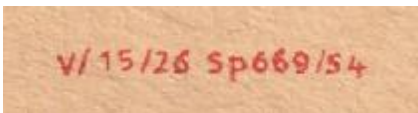


ERFA



009

/54



ERFA



009-A

/54

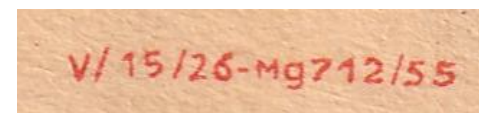


ERFA



010

/55



ERFA



011

V/15/26-

ERFA



012

/56

V/15/26-MgG 361/58

ERFA



013

V/15/26-MgG 361

ERFA



014

/59

V/15/26-MgG 361/59

ERFA



015



V/15/26-MgG 361

ERFA



016



V/15/26 MgG 361

ERFA



017



ERFA



018



ERFA



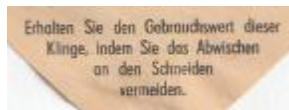
019



ERFA



020



ERFA



021

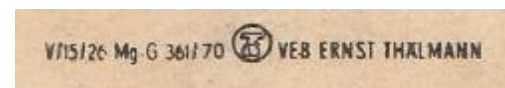


ERFA



022

170



ERFA



023

/71



ERFA



024



GARANT



001

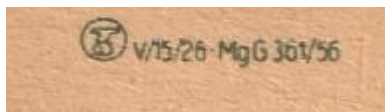


GARANT



002

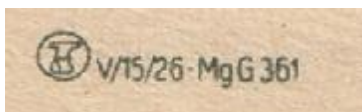
/56



GARANT



003

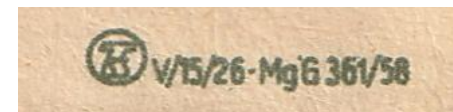


GARANT



004

/58



GOLF

Golf was one of oldest razor blades factories in Germany (from 1909). After 1945 blades was some time produced in old wrappers..

GOLF



001

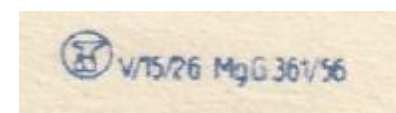
GOLF



002



probably years 1951-55



GOLF



003

GOLF



004

GOLF



GERMANY before 1922

