

HERWI



001

Leipzig M 314 Z 7759

Ideal



001

V/15/26 Mg-G 361/56

Ideal



002

V/15/26 Mg-G 361

Ideal



003

light blue

V/15/26 MgG 361

Ideal



003-A

blue

V/15/26 MgG 361

Ideal



004

V/15/26 MgG 361

Libelle



001



Libelle



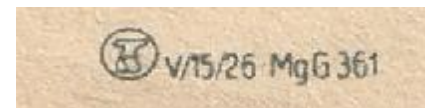
002



Libelle



003



Libelle



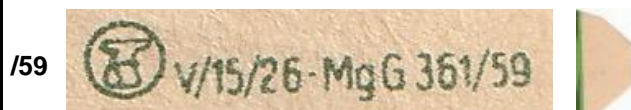
004



Libelle



005



Libelle



006

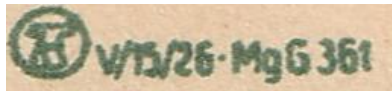


Libelle



007

GREEN

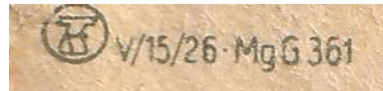


Libelle



007-A

LIGHT GREEN



Luxor



001



Luxor



box from Luxor 001



Luxor



CZECHOSLOVAKIA

most of Luxor blades (export to Africa) was produced in Czechoslovakia. Differences can be very small

MAGNETIC



001

**MAGNETIC**



box from Magnetic made in GDR

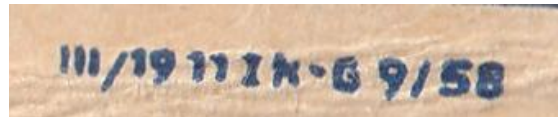
**MAGNETIC**



GERMANY before 1945

**INFO**

Duranto Fabrik was first in Czech in Sudety. After German annexation was moved to German area. After place changing was produced blades "Asra" and "Magnetic", with number 789. After 1945 was produced Duranto and Magnetic razor blades.



789



Magnetic: 1945-1958, Duranto 1951-1959

**ASRA**



GERMANY before 1945

789



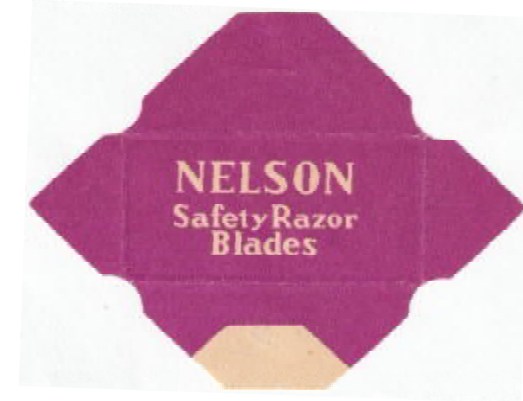
**NELSON**



001

export to Africa

**NELSON**



002

export to Africa

**NELSON**



003

export to Africa

REGD TRADE MARK

**NELSON**



004

export to Africa

REGD TRADE MARK

**NELSON**



005

1427010-6973

**NELSON**



006

**NELSON**



CHINA

exopt to Africa

**NOSRAT**



001

exopt to Africa

NOSRAT



002

exopt to Africa

NOSRAT



003

exopt to Africa

Olympia



001

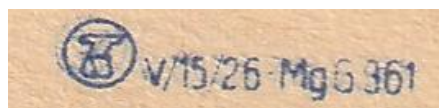
/56



Olympia



002

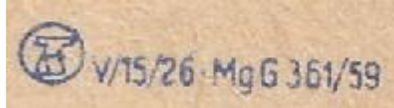


Olympia



003

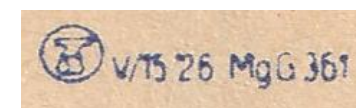
/59



Olympia



004



Olympia



005

REKORD

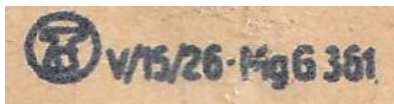


001

REKORD



002



/64



Spezial



001

Spezial



002

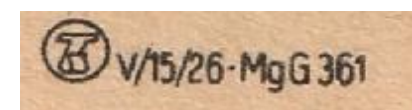
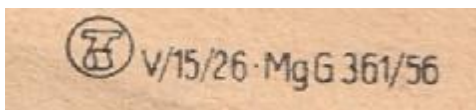
Spezial



003



/56



**Spezial**



004

**Spezial**



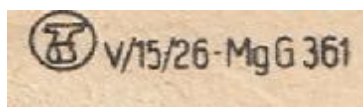
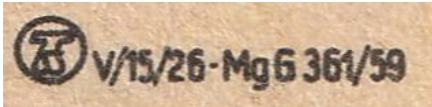
005

**STABIL**



001

/59



1946 Ritzma (next Feintechnik Eisfeld)

**Stabil**



002

**Start**



001

**Start**

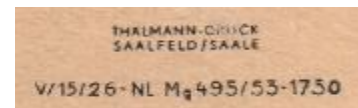


002

Feintechnik Eisfeld (before Ritzma, next Erfa)

FTE= FeinTechnik Eisfeld

/53-1750



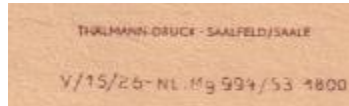


START



003

/53-1800

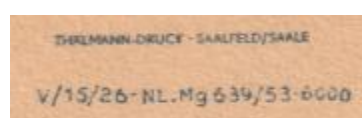


START



004

/53-6000

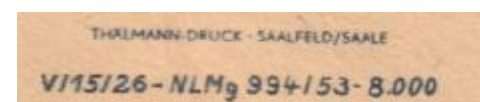


START



005

/53-8000



START



006

/53-8000

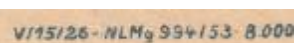


START



007

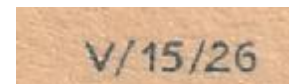
/53-8000



START



008



**Stern**



001

**Stern**

reverse pattern

002

**SUN OF ARABY**



001

export to Asia

**SUN OF ARABY**



**WEST GERMANY**

export to Asia

**SUN OF ARABY**



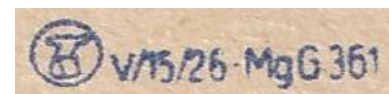
**WEST GERMANY**

export to Asia

**TATRA**



**BOX**



**UNIDAD POR LA PAZ**



001

export to Cuba

**UNIDAD POR LA PAZ**



**BOX**

