

"280"



EDGED

001

export to Cuba

"280"



EDGED

002

export to Cuba

"280"



BOX

export to Cuba

"280"



USA

export to Cuba before Castro rebellion

77



001

AUSLESE



001



AUSLESE

AUSLESE

AUSLESE



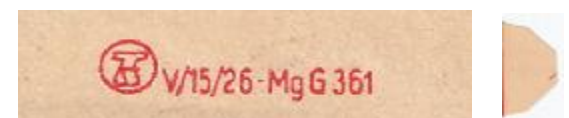
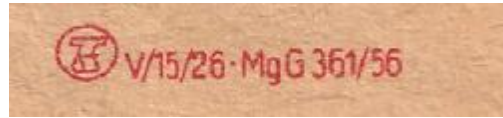
002

003

004



/56



AUSLESE

AUSLESE

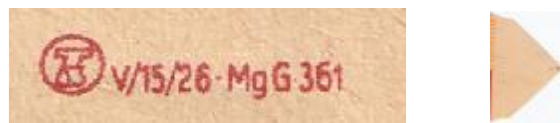
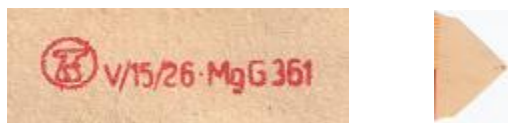
AUSLESE



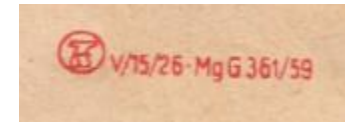
005

006

007



/59



AUSLESE



008

/62

V115/26 Mg-G 361/62  VEB ERNST THALMANN

AUSLESE



009

/63

V115/26 Mg-G 361/63  VEB ERNST THALMANN

CROMA



001

/76

V115/26 Mg-G 361/76  VEB ERNST THALMANN

CROMA



002

/76

V115/26 Mg G 361/76  VEB ERNST THALMANN

CROMA



003

CROMA



004

/76

V115/26 Mg-G 361/76  VEB ERNST THALMANN

CROMA



005



DERBY



001



DERBY



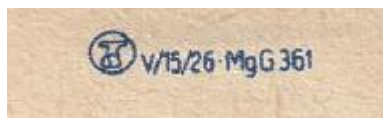
002



DERBY



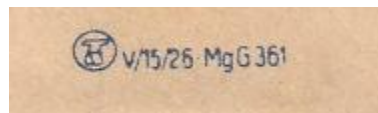
003



DERBY



004



DERBY



005



DERBY



006

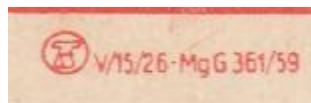


DOXA



BOX

BOX with blades without wrappers

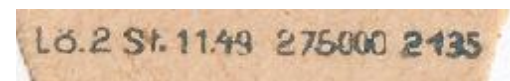


Durato



001

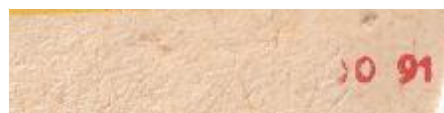
11/1949



Durato



002



INFO

Durato Fabrik was first in Czech in Sudety. After German annexation of Sudetenland was moved to German area. After place changing was produced blades "Asra" and "Magnetic", with number 789. After 1945 was produced Duranto and Magnetic

Production in GDR:
Magnetic: 1945-1958, Duranto 1951-1959

Durato



CZECHOSLOVAKIA before 1938

Durato



CZECHOSLOVAKIA before 1938

Durato



GERMANY before 1945

Durato



GERMANY before 1945

Solingen number 789

Solingen number 789

ERFA



001

ERFA



002

ERFA



003



V/15/26 Sp669/54



V/15/26 Sp669/54

Ⓢ V/15/26 MgG 361/56

ERFA



004



ERFA



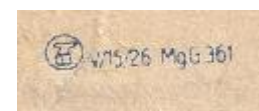
004-A



ERFA



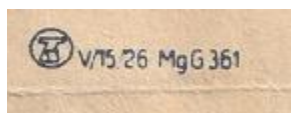
005



ERFA



006



ERFA



007



ERFA



008

/54



ERFA



008-A

/54

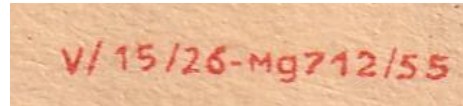


ERFA



009

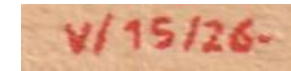
/55



ERFA



010



ERFA



011

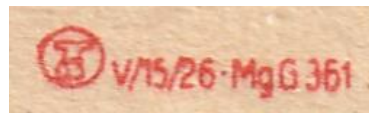
/56



ERFA



012

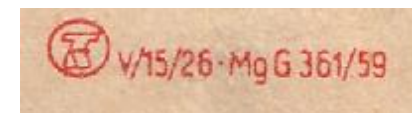


ERFA



013

/59



ERFA



014

ERFA

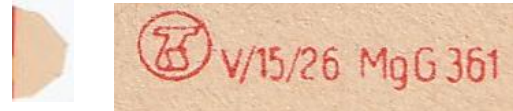


015

ERFA



016



ERFA



017

ERFA

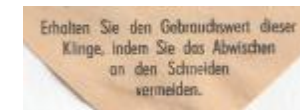


018

ERFA



019



ERFA



020




ERFA



021

/70

V15/26 Mg-G 361/70  VEB ERNST THALMANN

ERFA



022


/71

V15/26 Mg-G 361/71  VEB ERNST THALMANN

ERFA



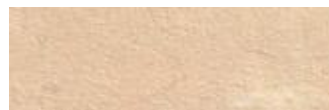
023

V15/26 Mg-G 361  VEB ERNST THALMANN

GARANT



001

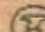


GARANT



002

/56

 V15/26 MgG 361/56

GARANT

GARANT

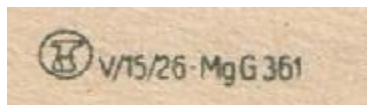
GOLF



Golf was one of oldest razor blades factories in Germany (from 1909). After 1945 blades was some time produced in old wrappers..

003

004



/58



GOLF

GOLF

GOLF



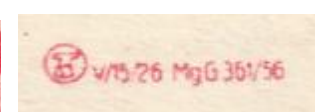
001

002

003



probably years 1951-55



GOLF



004

GOLF

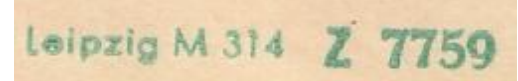
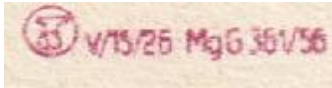


GERMANY before 1922

HERWI



001



Ideal



001

Ideal

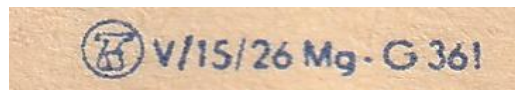
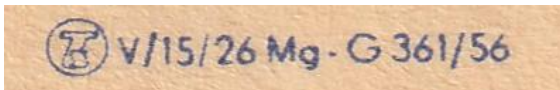


002

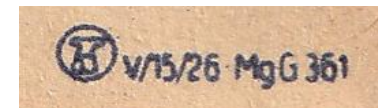
Ideal



003



light blue

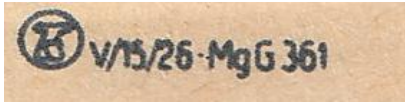


Ideal



003-A

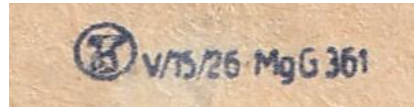
blue



Ideal



004



Libelle



001



Libelle



002

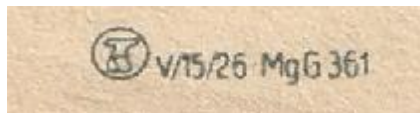
/56



Libelle



003

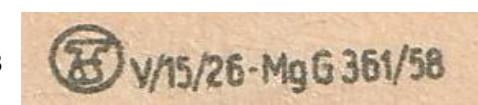


Libelle



004

/58



Libelle



lackiert

005

Libelle



lackiert

006


Libelle



lackiert

007

/59

 v/15/26-MgG 361/59

/59

 v/15/26-MgG 361/59

GREEN

 v/15/26-MgG 361

Libelle



lackiert

007-A

Luxor




001

Luxor




box from Luxor 001

LIGHT GREEN

 v/15/26-MgG 361



 v/15/26-MgG 361

Luxor



CZECHOSLOVAKIA

most of Luxor blades (export to Africa) was produced in Czechoslovakia. Differences can be very small

MAGNETIC



001

MAGNETIC



box from Magnetic made in GDR



MAGNETIC



GERMANY before 1945

INFO

Durato Fabrik was first in Czech in Sudety. After German annexation was moved to German area. After place changing was produced blades "Asra" and "Magnetic", with number 789. After 1945 was produced Duranto and Magnetic razor blades.

ASRA



GERMANY before 1945

789



Magnetic: 1945-1958, Duranto 1951-1959

789



NELSON



001

export to Africa

NELSON



002

export to Africa

NELSON



003

export to Africa

REGD TRADE MARK

NELSON



004

export to Africa

REGD TRADE MARK

NELSON



005

NELSON



CHINA

exopt to Africa

NOSRAT



001

exopt to Africa

NOSRAT



002

exopt to Africa

NOSRAT



003

exopt to Africa

Olympia



001

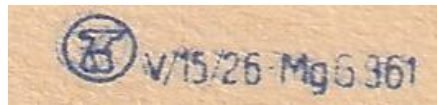
/56



Olympia



002

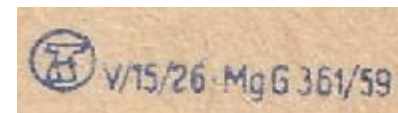


Olympia



003

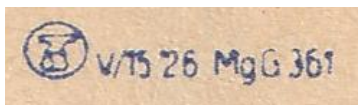
/59



Olympia



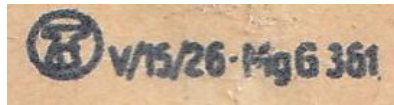
004



Olympia



005



REKORD



001



REKORD



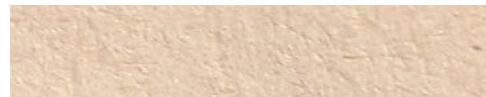
002



Spezial



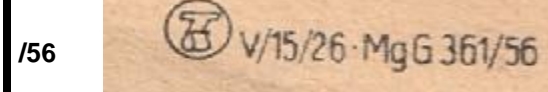
001



Spezial



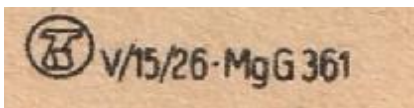
002



Spezial



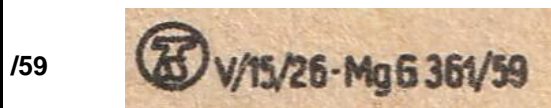
003



Spezial



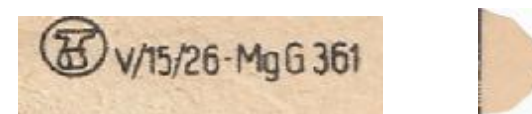
004



Spezial



005



STABIL



001

1946 Ritzma (next Feintechnik Eisfeld)

Stabil



002

Feintechnik Eisfeld (before Ritzma, next Erfa)

Start



001

FTE= FeinTechnik Eisfeld

Start

START

START

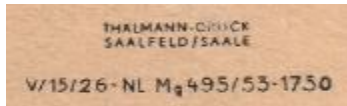


002

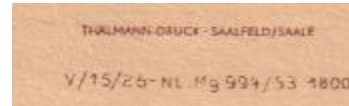
003

004

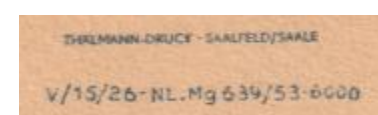
/53-1750



/53-1800



/53-6000



START

START

START

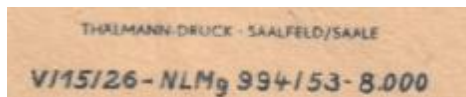


005

006

007

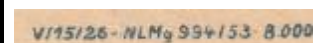
/53-8000



/53-8000



/53-8000



START



008

V/15/26

Stern



001

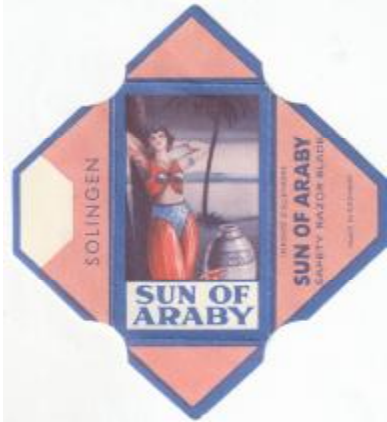
SUN OF ARABY



001

export to Asia

SUN OF ARABY



WEST GERMANY

export to Asia

SUN OF ARABY



WEST GERMANY

export to Asia

TATRA



BOX

Ⓢ V/15/26-MgG 361

UNIDAD POR LA PAZ



001

export to Cuba

UNIDAD POR LA PAZ



BOX

