

CHADE No 1



001

C 099

CHADE No 1



002

C 033

CHADE No 1



003

C 100

CHADE No 1



004

C 102

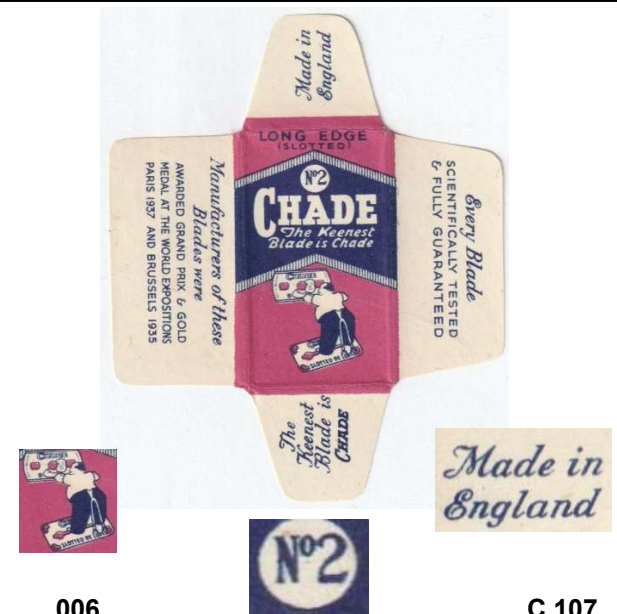
CHADE No 1



005

C 102

CHADE No 2



006

C 107

CHADE No 2



007

C 105

CHADE No 2



008

C 106

CHADE No 2



009

C 108

CHADE No 2



010

C 034

CHADE No 2



011

C 035

CHADE No 2



012

C 103

CHADE No 2



013

CHADE No 2



014

C 104

CHADE No 3



015

C 036

CHADE No 3



016

C 110

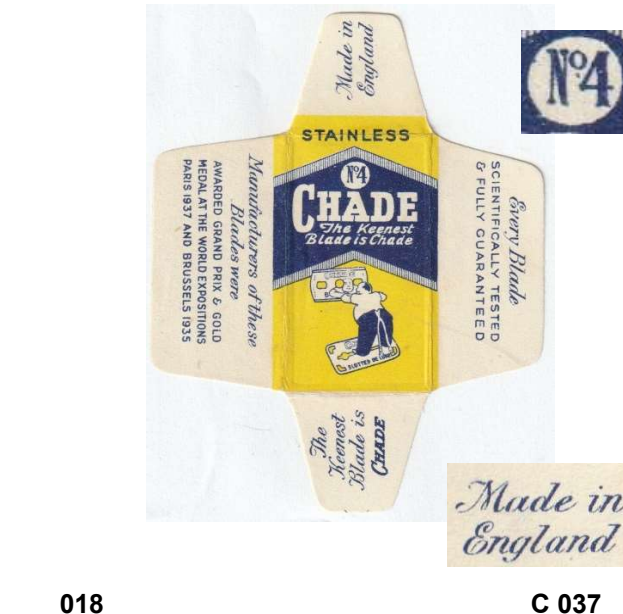
CHADE No 3



017

C 109

CHADE No 4



018

C 037

CHADE No 25



019

C 113

CHADE No 25



020

C 112

CHADE No 25



021

CHADE No 25



022

C 111

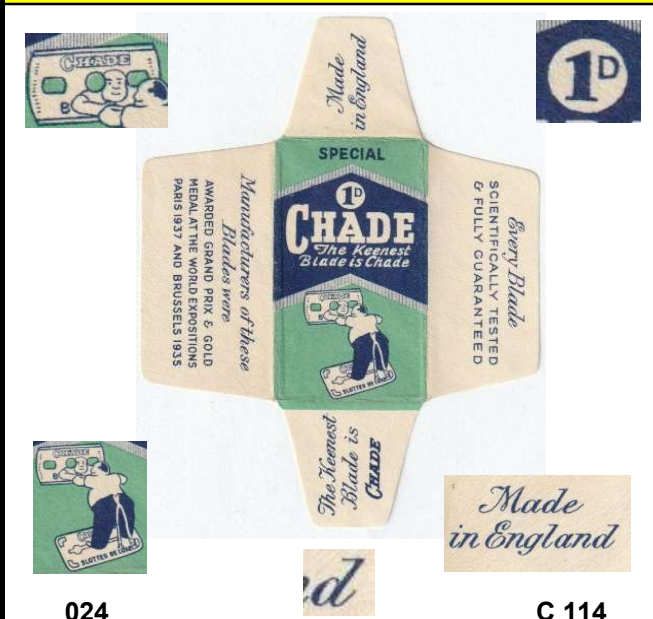
CHADE 1 D



023

C 115

CHADE 1 D



024

C 114

CHADE 1 D



Every Blade
SCIENTIFICALLY TESTED
& FULLY GUARANTEED
CHADE MANUFACTURING COMPANY LTD
135 SHEPHERDESS WALK, LONDON N.1

025

C 038

CHADE 1 1/2 D



026

C 039

CHADE 1 1/2 D



027

C 116

CHADE 1 1/2 D



028

C 117

CHADE 2 D



029

C 042

CHADE 2 D



030

CHADE 2 D



031

CHADE 2 D



032

C 041

CHADE 2 D



033

C 040

CHADE 2 D



034

C 043

CHADE 3 D



035

C 120

CHADE 3 D



036

C 044

CHADE 3 D



037

C 045

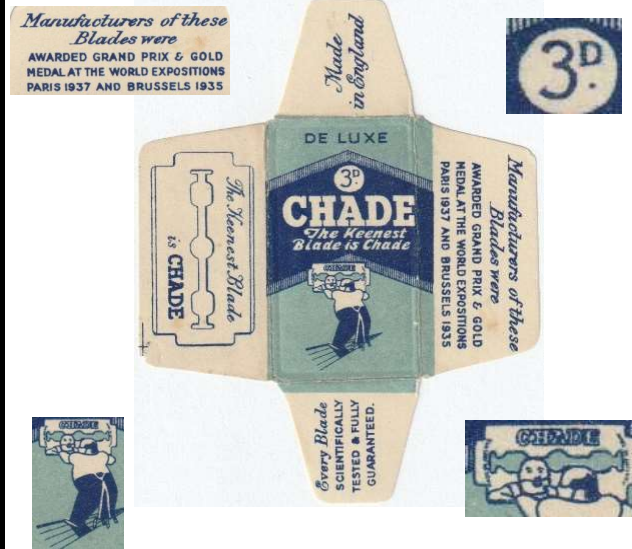
CHADE 3 D



038

C 119

CHADE 3 D



039

C 118

CHADE 3 1/2 D



040

C 121

CHADE 3 1/2 D



041

C 046

CHADE 3 1/2 D



042

CHADE



043 SPECIAL

CHADE



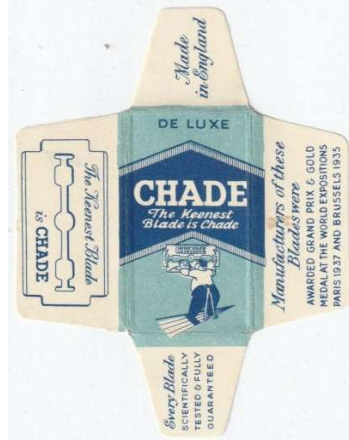
044 C 123

CHADE



045 THIN C 122

CHADE



046 DE LUXE C 047

CHADE



047 C 124

DE LUXE

CHADE



048 C 048

DE LUXE

CHADE



049

C 049

CHADE



050

C 126

CHADE



051

C 127

MANUFACTURERS OF THESE BLADES WERE AWARDED
GRAND PRIX & GOLD MEDAL at
the WORLD EXPOSITIONS
PARIS 1937 and
BRUSSELS 1935

Made in Great Britain
Every Blade
SCIENTIFICALLY
TESTED & FULLY
GUARANTEED

MANUFACTURERS OF THESE BLADES WERE AWARDED
GRAND PRIX & GOLD MEDAL at
the WORLD EXPOSITIONS
PARIS 1937 and
BRUSSELS 1935

Made in Great Britain
Every Blade
SCIENTIFICALLY
TESTED & FULLY
GUARANTEED

on wrapper text FOREIGN,
but on blade MADE IN ENGLAND

CHADE



052

C 125

CHADE



053

C 050

on wrapper text FOREIGN,
but on blade MADE IN ENGLAND