

NAPOLEON



001

N 013

NAPOLEON



002

N 014

NAVY



001

N 016

NCO



001

N 003

NELSON



001

N 007

NELSON



002

N 008

NELSON



003

N 009

NEOGENE



001

N 002



NEOGENE



002



The Neutral



001

NEW YORK



ARGENTINA



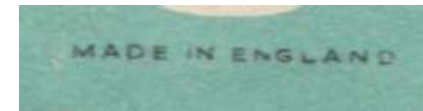
Argentinian fake

NIESO



001

N 010



export to Near East

NIESO



NIESO



"No Name"



GERMANY

CZECHOSLOVAKIA

001

N 011

MADE IN GERMANY

export to Near East

LIDOTYPIA - OPAVA

export to Near East



"No Name"

"No Name"

NON-XLL



002

N 012

003

001

N 005



NON-XLL



002

N 006

NORFOLK



001

N 004

NORMAN-EXTRA



001

Northwood



001

NOTAP



001

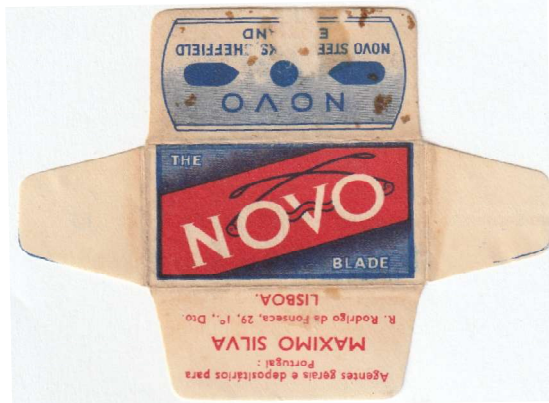
N 001

NOVO



001

NOVO



002

N 015

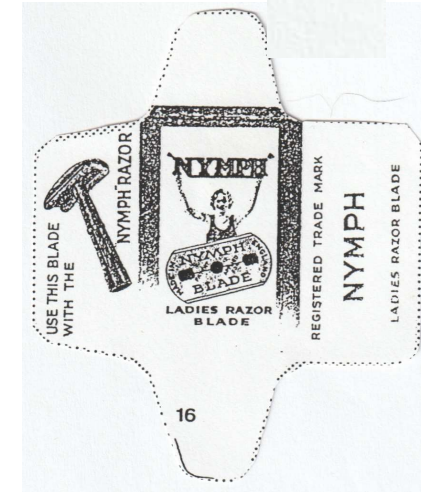
export to PORTUGAL

"NYMPH"



001

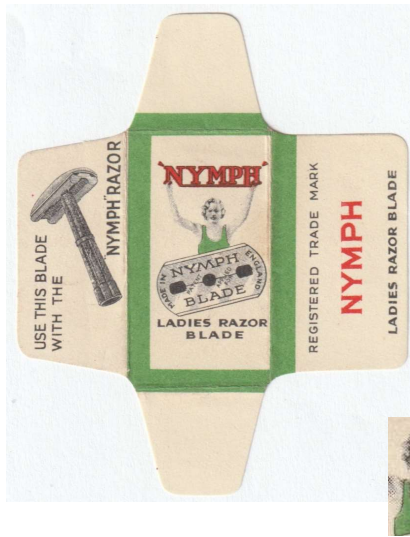
"NYMPH"



002

L&S 016

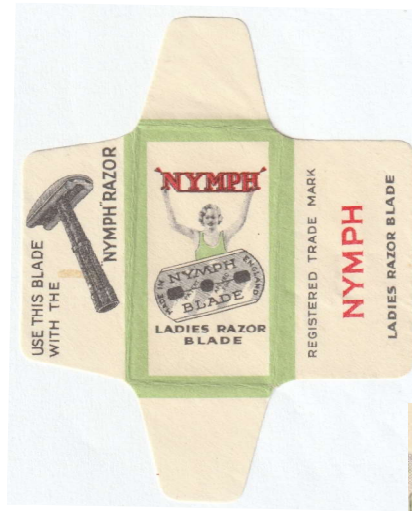
"NYMPH"



003

L&S 015

"NYMPH"

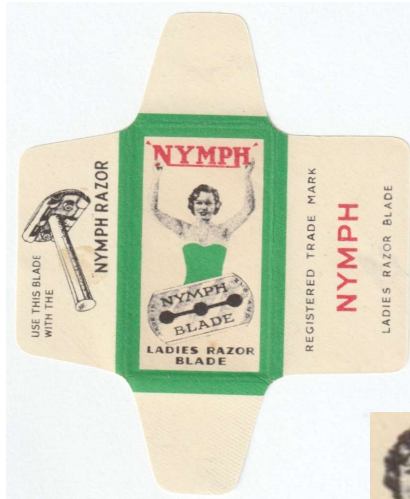


004

"NYMPH"



"NYMPH"



006

L&S 018

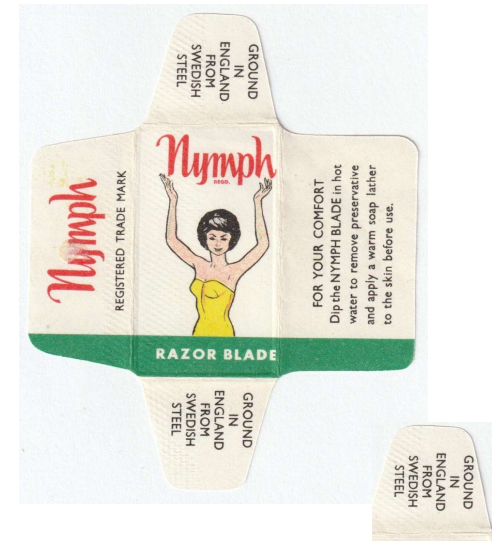
NYMPH



007

L&S 017

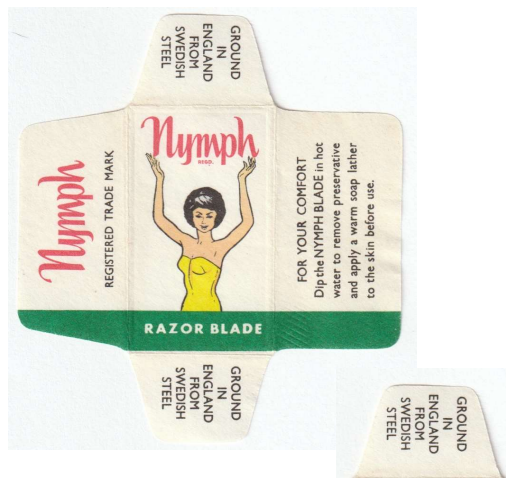
NYMPH



008

L&S 019

NYMPH



009

L&S 020

NYMPH



010

L&S 022

NYMPH



011

L&S 023



NYMPH



012

L&S 021

NYMPH



013

NYMPH



014

NYMPH



015

L&S 024

NYMPH



DENMARK IMPORT L&S 025

MADE IN DENMARK FROM BRITISH STEEL