

A B



001

A 017

ACE OF BLADES



001

A 014

ACE OF BLADES



002

A 013

CLASS SHAVING BLADE by
G. T. MONEY,
South Creake, NORFOLK. Eng.

CLASS SHAVING BLADE
Sole Distributors
CRANBUX LTD., NORWICH

ACE OF BLADES



003

A 034

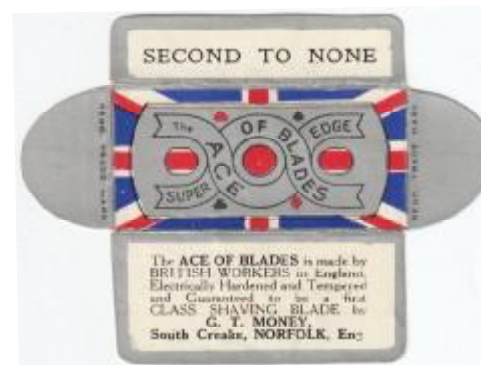
ACE OF BLADES



004

A 010

ACE OF BLADES



005

A 033

CLASS SHAVING BLADE.
Sole Distributors:
CRANBUX LTD., NORWICH.

CLASS SHAVING BLADE.
ACE OF BLADES LTD.,
36, Basinghall St., LONDON.

REGD. TRADE MARK
MONEY,
NORFOLK, Eng

ACE OF BLADES



006

A 011

ACE OF BLADES



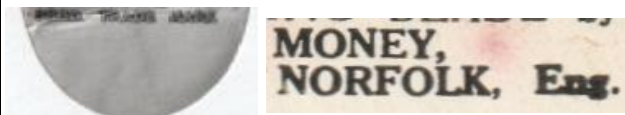
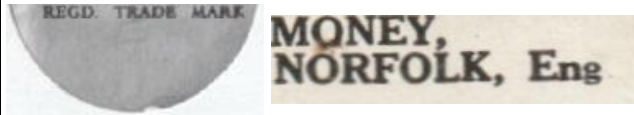
007

ACE OF BLADES



008

A 012



ACE OF BLADES



009

ACE OF BLADES



010

A 007

ACE OF BLADES



011

A 008

ACE OF BLADES



012

A 009

ACME



001

A 046

ADASTRA



001

A 031



ADASTRA



002

A 030

ADASTRA



003

ADASTRA



004

A 003



AHB



001

ALBERT BAYLISS



001

A 015

ALBERT BAYLISS



002

A 030

ALBUN



001

A 002

ALBUN



002

ALCAZAR



001

A 21



ALCAZAR



002

A 40



ALCAZAR



003



ALCAZAR



004

A 44



ALCAZAR



005

ALCAZAR



006



ALCAZAR



007



ALCAZAR



008

ALCAZAR



009

ALCAZAR (ADV.)



010

A 42

ALCAZAR



010

ALCAZAR (ADV.)



011

A 43

ALCAZAR



011

ALCAZAR



012

ALL BRITISH



001

ALL BRITISH



002

A 6



ALL BRITISH



003

A 5

ALL BRITISH



004

A 32

ALL BRITISH



005



ALL SHOOTING SALOON



001

ALVIC



001

A 48

"AMERAX"



001



"AMO"



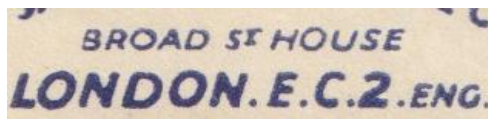
001

A 36

"AMO"



002

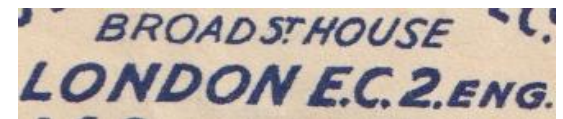


"AMO"



003

A 35



"AMO"



004

A 38

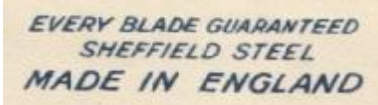


"AMO"



005

A 19

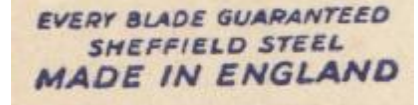


"AMO"



006

A 37



"AMO"



GERMANY



AMO



007

A 20



AMO Reg. No. 483998

AMO



008

A 39



AMO Reg. No. 483998

APCRA



001

A 45

"ARBON"



001

A 23

ARGENT



001

ARGYLL



001

A 23

ARGYLL



002

A 24

ARISTOCRAT



001

A 26

MADE IN ENGLAND

ARISTOCRAT



002

DO NOT WIPE BLADE
MADE IN ENGLAND

ARMY BLADE



001

ARMY BLADE



002

BRITISH MADE

ARMY BLADE (ADV.)



003

ARMY BLADE



004

ARMY BLADE (ADV.)



005

BRITISH MADE

ARMY BLADE



003

ARMY BLADE



GERMANY

ARTHUR LEE & SONS LTD



001

A 19

MADE IN GERMANY

ARTIFEX



001

A 18

ARTIFEX



002

100% BRITISH
THESE BLADES ARE
OILED.
DIP IN HOT WATER
BEFORE USING.
MADE IN ENGLAND

100% BRITISH
THESE BLADES ARE
OILED.
DIP IN HOT WATER
BEFORE USING
MADE IN ENGLAND

ARTIFEX



GERMANY

ARTIFEX



GERMANY

ATTA-BOY



001

A 52

BRITISH



ATTA-BOY



002

A 53

BRITISH



ATTA-BOY



003

AUTO-STEEL



001

A 50

BRITISH



AUTO-STEEL



002

AUTO-STEEL



003

A 51

"AVON-BLADE"



001

A 25

"AVONIA"



001

A 1

"AVONIA"



002

A 28

AVRIL



001

A 47

AZAZA



001