

**CÆSAR (ADV)**



001

C 023

**ADVERTISEMENT**



001

**The Call !**



001

C 056

**The Call !**



002

**The Call !**



003

C 005

**The Call !**



004

C 057

The Call



005

The Call



006

CALL BOY



001

C 024

CAMEO



001

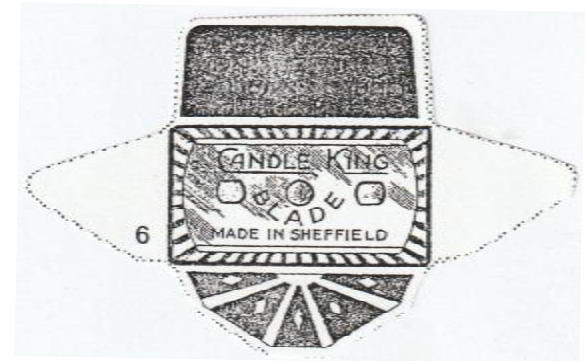
C 096

CAMEO



002

CANDLE KING



001

C 006

**CANDLE KING**



002

**"CANNON" BRAND (ADV)**



001

**ADVERTISEMENT**



001

**CAP ARCONA**



001

**CAP ARCONA**



GERMANY

**CAPSTAN**



001

C 013

**Fabricación Inglesa**

**EXPORT TO ARGENTINA**

**EXPORT TO ARGENTINA (SOUPLEX)**

CAPSTAN



002

C 014

CAPSTAN



003

C 090

CAPTAIN



001

C 088

CARMEN



001

C 081

Carnos



001

C 060

Carnos



002

C 010

EVERY CARNOS BLADE IS MADE OF FINEST QUALITY STEEL GUARANTEED GROUND AND HAND HONED AT SLOUGH, BUCKS. ENGLAND.



EVERY CARNOS BLADE IS MADE OF FINEST QUALITY STEEL GUARANTEED GROUND AND HAND HONED AT SLOUGH, BUCKS. ENGLAND.



**Carnos**



003

**Carnos**



004

C 007

**Carnos**



005

C 009

EVERY CARNOS BLADE IS MADE OF FINEST QUALITY STEEL GUARANTEED GROUND AND HAND HONED AT SLOUGH, BUCKS. ENGLAND.



EVERY CARNOS BLADE IS MADE OF FINEST QUALITY STEEL GUARANTEED GROUND AND HAND HONED AT SLOUGH, BUCKS. ENGLAND.



EVERY CARNOS BLADE IS MADE OF FINEST QUALITY STEEL GUARANTEED GROUND AND HAND HONED AT SLOUGH, BUCKS. ENGLAND.



**Carnos**



006

**Carnos**



007

C 008

**Carnos**



008

C 059

EVERY CARNOS BLADE IS MADE OF FINEST QUALITY STEEL GUARANTEED GROUND AND HAND HONED AT SLOUGH, BUCKS. ENGLAND.



EVERY CARNOS BLADE IS MADE OF FINEST QUALITY STEEL GUARANTEED GROUND AND HAND HONED AT SLOUGH, BUCKS. ENGLAND.



EVERY CARNOS BLADE IS MADE OF FINEST QUALITY SHEFFIELD STEEL GUARANTEED CUT, GROUND AND HONED AT SLOUGH, BUCKS. ENGLAND.



**Carnos**



009

C 011

**Carnos**



010

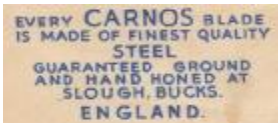
C 058

**Carnos**



011

C 012



**CARSIL**



001

C 001

**CARTER**



001

C 004

**CARTER**

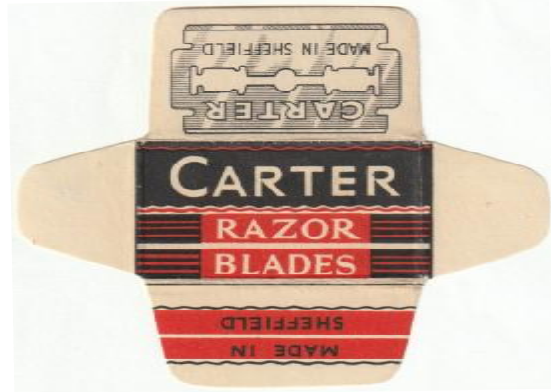


002

C 054



**CARTER**



003

C 055

**CARTER**



004

**CASINO**



001



**CASINO**



002

C 078

**CASINO (ADV)**



003

C 077

**ADVERTISEMENT**



003



CASSIE



001

C 026



CASSIE



002

C 063



Cavalier



001

Cavalier



002

CC & CO



001

CC & CO



002





**CHACO**



001

**CHACO**



002

**CHAMPION**



001

C 091



**CHAMPION**



002

C 092

**CHANDOS**



001

**CHARTUS**



001

C 061



CHARTUS



002

C 015



CHARTUS



003



CHEERIO



001

C 067



CHEERIO



002

C 069



CHEERIO



003

C 029



CHEERIO



004

C 070



CHEERIO



005

C 065

CHEERIO



006

C 068

CHEERIO



007



CHEER-I-O



008

C 066

CHEER-I-O



RED PAPER

009

C 036

CHEER-I-O



010



CHEERIO BOYS



001

CHIN-CHAT



001

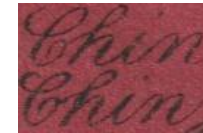
CHIN-CHIN



001

C 030

RED PAPER



CHIN-CHIN



002

C 031

RED PAPER



CHOLMONDLEY



001

C 080

CHUM-CHUM



001



**CHUM-CHUM**



002

**CITATION**



001

C 075

**CITY**



001

C 062

RED PAPER



KIRBY, BEARD & CO. LTD.  
BIRMINGHAM, ENGLAND

**CITY**



002

C 017

**CITY**



003

**CITY**



004



**CLASSIC**



001

C 018

**CLEMAK**



001

C 093

**CLEMAK**



002



**CLEMAK**



**CLEMAK**



004

093

**CLEMAZOR**



001

**CLOCK-BLADE**



001

**CLUB**



001

C 084

**CLUB**



002

BLACK TEXT

DARK BLUE TEXT

**CLUB**



003

**CLUB**



004

C 083

**CN**



001

C 016

**Colimar**



001

C 003



**Colimar**



002

C 053



**Colimar**



003



**Colimar**



004

C 052



**Colimar**



005

C 051

**Colonel**



001

C 085



**COLWORTH**



001

**COMMANDO**



001

**Comrade**



001

C 076



**Comrade**



002

**Concord**



001

**The Conqueror**



001

C 032



It's reduced picture - blade with four edges have 4,5 cm x 4.5 cm when closed , opened wrapper have 11,8 x 11,5 cm



The Conqueror



002

C 071



The Conqueror



003

The Conqueror



004

The Conqueror



import from GERMANY

The Conqueror



import from GERMANY

The Conqueror



import from GERMANY

MADE IN GERMANY

**CONROCK**



001

C 025

**CORONATION**



001

C 087

**CORONET**



001

C 089

**COURT**



001

C 002

**COURT**



002

**CRAIG & ROSE**



001

C 098

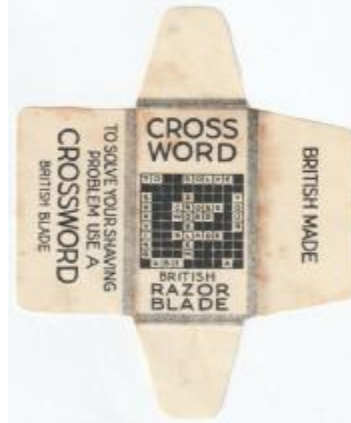
**CRITERION BLADE**



001

C 004

**CROSSWORD**



001

C 027

**CROSSWORD**



002

C 028

**CROWN AUTOMATIC**



001

C 072

**CROWN POINT**



001

**The Crown & Sword**



001

C 027

Blade was produced on licence from "ERN" (Solingen, Germany), owner of "Crown & Sword" trade mark

The Crown & Sword



GERMANY

The Crown & Sword



GERMANY

CUM-BAK



001

C 082

Cutty Sark



001

C 079

CYGNETIC



001

C 073

CYGNETIC



002

C 074