

**KANOK**



001

**KASHMEERA**



001

**KASHMEERA**



GERMANY

MADE IN ENGLAND

EXPORT TO INDIA

MADE IN GERMANY

EXPORT TO INDIA

**KAYS**



001

**KELSON**



001

**KELSON**



002

FINEST SHEFFIELD MADE  
Registered  
Trade Mark

FINEST SHEFFIELD MADE  
Registered  
Trade Mark

**KELSON**



003

**KELSON**



004

K017

**KELSON**



005

A PERFECT SHAVE  
BRITISH MADE

A PERFECT SHAVE  
BRITISH MADE

**KEN**



GERMANY IMPORT

FOREIGN

K049

**KING**



001

?

**KING**



GERMANY IMPORT

K050

**KINGSTON**



001

K015

**KINGSTON**



002

K045

**KINGSWAY**



001

**KINGSWAY**



002

K016

**KINGSWAY**



003

K046

**KINGSWAY**



004



A SUPER HONED BLADE

A SUPER HONED BLADE

**KIRBEE**

**"Kirbee"**

**"Kirbee"**



001

K053

002

K051

003

K052

**KIRBY BEARD & Co LTD**

**KIRBY BEARD & Co**

**KIRBY BEARD & Co**



001

FRANCE

FRANCE

MADE IN ENGLAND.

MADE IN FRANCE.

**Kismet**



001

**Kismet**



002

K054

**Kismet**



003

K055



**Kismet**



GERMANY IMPORT

**Kismet**

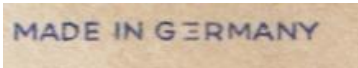


GERMANY IMPORT

**Kismet**



004



**Kismet**



005

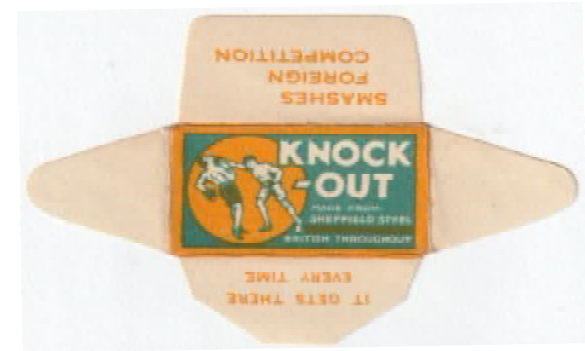
**KIT KAT**



001

K001

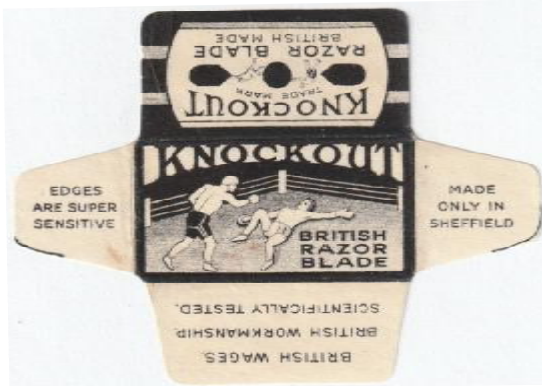
**KNOCKOUT**



001

MADE IN SCOTLAND ON BLADE

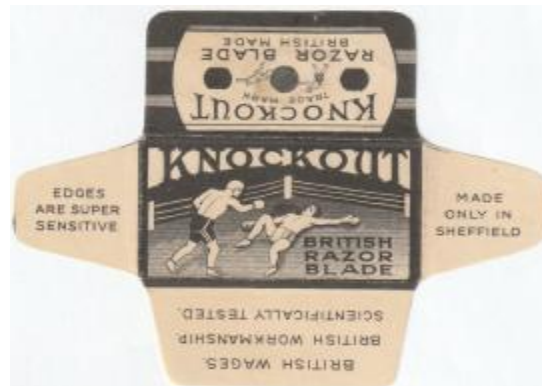
**KNOCKOUT**



002

K002

**KNOCKOUT**



003

**KNOCKOUT**



004

K003



**KNOCKOUT**



005

K004

**KNOCKOUT**



006

K023

**KNOCKOUT**



007

K005



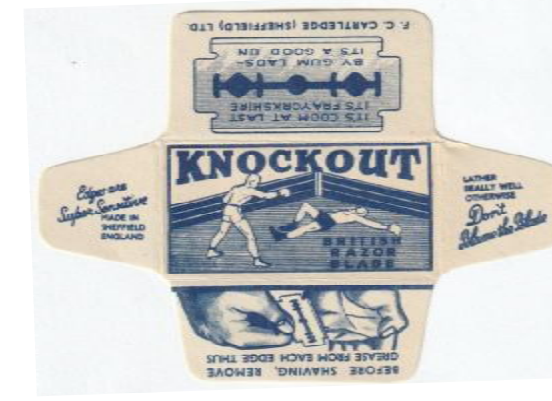
**KNOCKOUT**



**KNOCKOUT**



**KNOCKOUT**



009

K006

010

**KOR-VAL**



001

K022

**KUMFI-KUT**



001

K021

**"KWIK-SPECIAL"**



001

K047



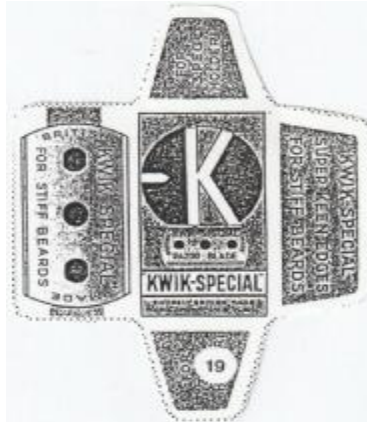
**"KWIK-SPECIAL"**



002

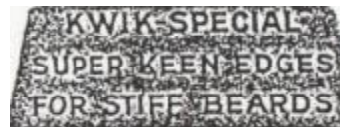
K048

**"KWIK-SPECIAL"**



003

K019



**"KWIK-SPECIAL"**



004

K020

