

**NAPOLEON**



001

N 013

**NAPOLEON**



002

N 014

**NAVY**



001

N 016

**NCO**



001

N 003

**NELSON**



001

N 007

**NELSON**



002

N 008

**NELSON**



003

N 009

**NEOGENE**



001

N 002

**NEOGENE**



002



**The Neutral**



001

**NIESO**



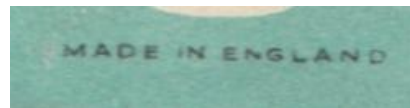
001

N 010

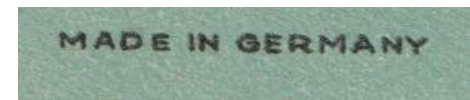
**NIESO**



GERMANY



export to Near East



export to Near East

NIESO



CZECHOSLOVAKIA

LIDOTYPIA - OPAVA

export to Near East

"No Name"



001

N 011

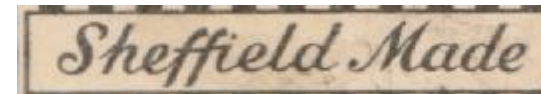


"No Name"



002

N 012



"No Name"



003

NON-XLL



001

N 005

NON-XLL



002

N 006

**NORFOLK**



001

N 004

**NORMAN-EXTRA**



001

**Northwood**



001

**NOTAP**



001

N 001

**NOVO**



001

**NOVO**



002

N 015

export to PORTUGAL

"NYMPH"



001

"NYMPH"



002

L&S 016

"NYMPH"



003

L&S 015



"NYMPH"



004

"NYMPH"



006

L&S 018



**NYMPH**



007

L&S 017

**NYMPH**



008

L&S 019

**NYMPH**



009

L&S 020



**NYMPH**



010

L&S 022

**NYMPH**



011

L&S 023

**NYMPH**



012

L&S 021



**NYMPH**



013

**NYMPH**



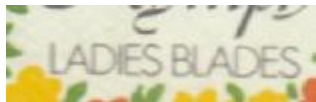
014

**NYMPH**



015

L&S 024



**NYMPH**



DENMARK IMPORT L&S 025

