

**NAPOLEON**



001

N 013

**NAPOLEON**



002

N 014

**NAVY**



001

N 016

**NCO**



001

N 003

**NELSON**



001

N 007

**NELSON**



002

N 008

**NELSON**



003

N 009

**NEOGENE**



001

N 002



**NEOGENE**



002



**The Neutral**



001

**NEW YORK**



ARGENTINA



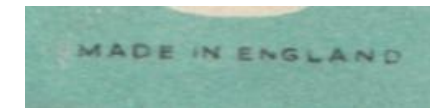
Argentinian fake

**NIESO**



001

N 010



export to Near East

NIESO



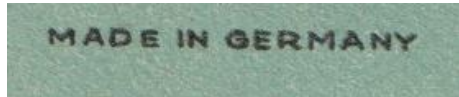
NIESO



"No Name"

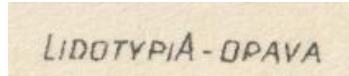


GERMANY



export to Near East

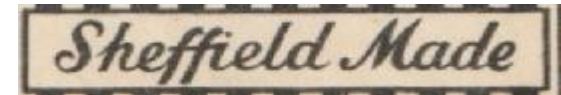
CZECHOSLOVAKIA



export to Near East

001

N 011



"No Name"



002

N 012

"No Name"



003

NON-XLL



001

N 005



**NON-XLL**



002

N 006

**NORFOLK**



001

N 004

**NORMAN-EXTRA**



001

**Northwood**



001

**NOTAP**



001

N 001

**NOVO**



001

**NOVO**



002

N 015

export to PORTUGAL

**"NYMPH"**



001

**"NYMPH"**



002

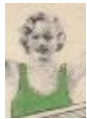
L&S 016

**"NYMPH"**



003

L&S 015



**"NYMPH"**



004



**"NYMPH"**



"NYMPH"



006

L&S 018

NYMPH



007

L&S 017

NYMPH



008

L&S 019



NYMPH



009

L&S 020

NYMPH



010

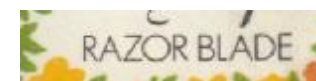
L&S 022

NYMPH



011

L&S 023



**NYMPH**



012

L&S 021

**NYMPH**



013

**NYMPH**



014



**NYMPH**



015

L&S 024

**NYMPH**



DENMARK IMPORT L&S 025

