

SP



IRELAND

SPEAR



001

S 010

SPEAR POINT



002

SPEEDWAY



001

S 104

SPEEDWAY



002

S 102

SPEEDWAY



003

S 103

SPEEDWAY



004

S 101

SPHINX



001

SPITFIRE



001

S 027

pictured was colour copy, not real blade!

Sport



001

"SPORTSMAN"



001

S 004

SPURITE



001

S 005

SQUARE DEAL



001

S 026

STABLE



001

S 042

THE "STABLE"



002

S 041

STANDARD



001

S 024

STANDARD



002

STANLEY



001



STAR & CROSS



001

073

STAR & CROSS



001 SA (EXPORT TO USA)

STAR & CROSS



002

STAR CADET INFO

First STAR blades was exported to France under name "Star Cadet" . These single edge blades was produced on begin of XX century

STAR CADET



001

S 165

EXPORT TO FRANCE

STAR CADET



USA

EXPORT TO FRANCE

STAR CADET



USA

EXPORT TO FRANCE

STEAD



001

S 085

STEAD



002

STEAD



003

S 084

STEAD



004

STEAD



005

S 080

STEAD



006

S 083

STEAD



007

S 081

STEAD



008

S 082



STEAD



009

STEAD



010

STECO



001

S 017



STEDE



001

BRITISH STERLING



TRANSFERRED TO B

STESCO-GLYDER



001

STIMULUS



001

ST. LEGER



001

S 092

ST. LEGER



002

S 093



ST. LEGER



003

S 094

ST. LEGER



004

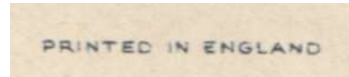
S 095

ST. LEGER



005

S 097



STREAMLINE



001

S 035

STREAMLINE



002

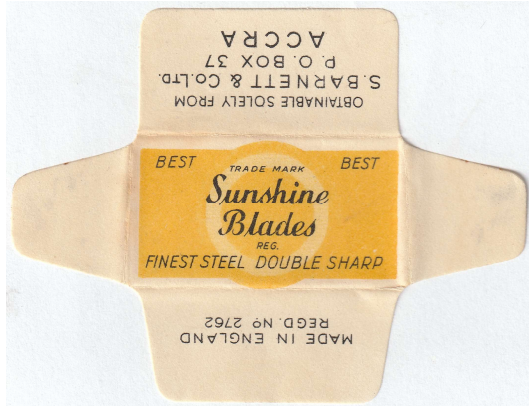
S 036

STREAMLINE



003

Sunshine blades



001

Sunshine blades



GERMANY

Number of German factory: 653

SUPA



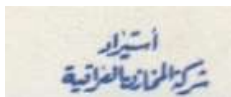
001

S 014

Super Glide



001



Super Glide



002

S 045

Super Glide



003

S 044

PLATINUM

Super Glide



004

S 043

Made in Gt. Britain

Super Glide



BELGIUM

MADE IN BELGIUM

Super Glide



BELGIUM

Super Glide



ITALY

Super S Blade



001

SUPER SHARP



001

S 046

SUPER SILVER INFO

GILLETTE proved to buy Wilkinson. First two SUPER SILVER blades are made by Wilkinson in this period. Antitrust office stopped this acquisition (at this moment).

SUPER SILVER



001

SUPER SILVER



002

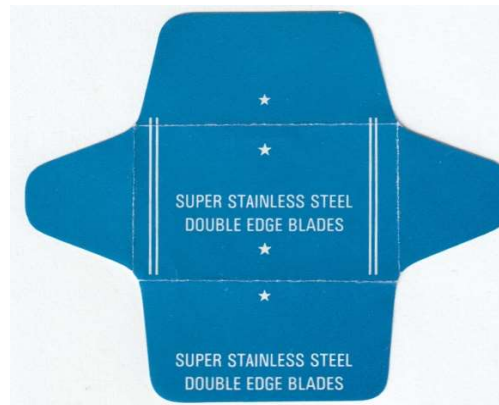
SUPER SILVER



003

it is not sure if this is England

SUPER STAINLESS STEEL



on blade "PERMA -made in Scotland"

SUPER STAINLESS STEEL St Mark



001

S 048

SWAN



001

SWAN



002

S 109

SWAN



003

The SWAN



The SWAN



SWAN



004

S 108

SWAN



005

S 110

SWAN



006

S 107

SWAN (ADV)



007

ADVERTISEMENT



007

"SWANEE"



001

S 013

THIS PATENT BLADE IS DESIGNED TO FIT THE USUAL SINGLE EDGE HOLDERS

"SWANEE"



001 PS

Sweet & Lovely



001

S 028

SWELL



001

S 003

SWIFT



001

S 025

SWIFTSURE



001

S 020

SWORD of ARABY



002

SWORD of ARABY



001

EXPORT TO EGYPT



SWORD of ARABY



SWEDEN

EXPORT TO EGYPT



SWORD of ARABY



USA

EXPORT TO EGYPT

