

**SP**



001

**SPEAR**



001

S 010

**SPEAR POINT**



002

**SPEEDWAY**



001

S 104

**SPEEDWAY**



002

S 102

**SPEEDWAY**



003

S 103

**SPEEDWAY**



004

S 101

**SPHINX**



001

**SPITFIRE**



001

S 027

INFO:  
pictured is colour copy, not real blade!

**"SPORTSMAN"**



001

S 004

**SPURITE**



001

S 005

**SQUARE DEAL**



001

S 026

**STABLE**



001

S 042

**THE "STABLE"**



002

S 041

**STANDARD**



001

S 024



**STANDARD**



002

**STANLEY**



001

**STAR INFO**

STAR was trade mark of Ever-Ready , may be first US razor blades (single edge) manufacturer ever.



Star was produced in USA, Great Britain, Canada, Sweden and Turkey

STAR



001

S 166

STAR



002

STAR



003

STAR



004

S 168

STAR



005

S 170

STAR



006

S 171



STAR



007

S 167

STAR



008

S 169

STAR



009



STAR



010

S 173

STAR



011

S 172

STAR



012

S 174



STAR



USA

STAR



013

S 176

STAR



014

S 175



STAR



015

STAR



TURKEY (ON LICENCE)

STAR



TURKEY (FAKE?)

**STAR & CROSS**



001

S 073

**STAR & CROSS**



001 SA

**STAR & CROSS**



002

export to USA



**STAR CADET**



001

S 165

**STAR CADET**



USA

**STAR CADET**



USA

EXPORT TO FRANCE

EXPORT TO FRANCE

EXPORT TO FRANCE

STEAD



001

S 085

STEAD



002

STEAD



003

S 084

STEAD



004

STEAD



005

S 080

STEAD



006

S 083

MADE BY  
J. STEAD & CO LTD.  
SHEFFIELD  
ENGLAND

DD

OR



STEAD



007

S 081

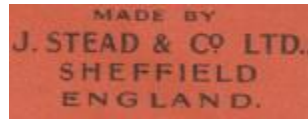


STEAD



008

S 082



STEAD



009



STECO



001

S 017

STEDE



001

BRITISH STERLING



TRANSFERRED TO B

**STESCO-GLYDER**



001

**STIMULUS**



001

**ST. LEGER**



001

S 092

**ST. LEGER**



002

S 093

**ST. LEGER**



003

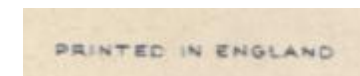
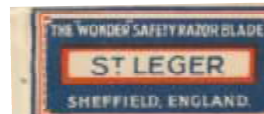
S 094

**ST. LEGER**



004

S 095



**ST. LEGER**



005

S 097

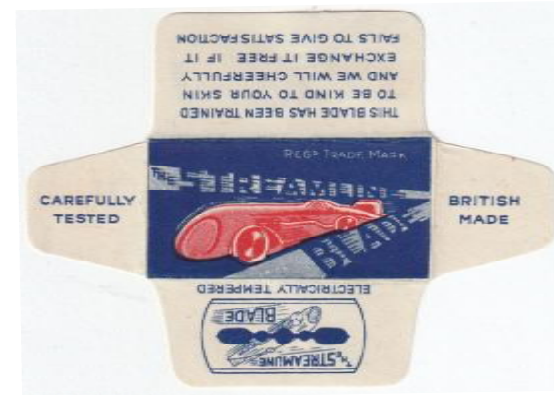
**STREAMLINE**



001

S 035

**STREAMLINE**



002

S 036

**STREAMLINE**



003

**SUPA**



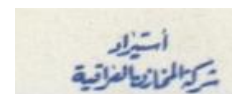
001

S 014

**Super Glide**



001





Super Glide



002

S 045

Super Glide



003

S 044

Super Glide



004

S 043

PLATINUM

Made in Gt. Britain

Super Glide



BELGIUM

Super Glide



BELGIUM

Super Glide



ITALY

MADE IN BELGIUM



**Super S Blade**



001

**SUPER SHARP**



001

S 046

**SUPER SILVER INFO**

GILLETTE proved to buy Wilkinson. First two SUPER SILVER blades are made by Wilkinson in this period. Antitrust office stopped this acquisition (at this moment).

**SUPER SILVER**



001

**SUPER SILVER**



002

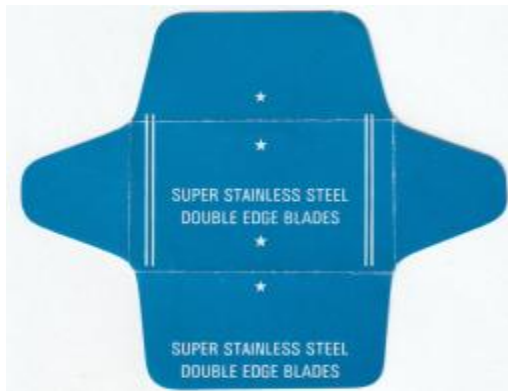
**SUPER SILVER**



003

it is not sure if this is England

**SUPER STAINLESS STEEL**



**SUPER STAINLESS STEEL St Mark**



**SWAN**



001

S 048

001

on blade "PERMA -made in Scotland"

**SWAN**



**SWAN**



**SWAN**



002

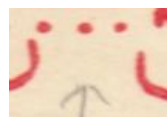
S 109

003

004

S 108

The SWAN



The SWAN



SWAN



005

S 110

SWAN



006

S 107

SWAN (ADV)



007

ADVERTISEMENT



007

"SWANEE"



001

S 013

Sweet & Lovely



001

S 028

THIS PATENT BLADE IS DESIGNED TO FIT THE USUAL SINGLE EDGE HOLDERS

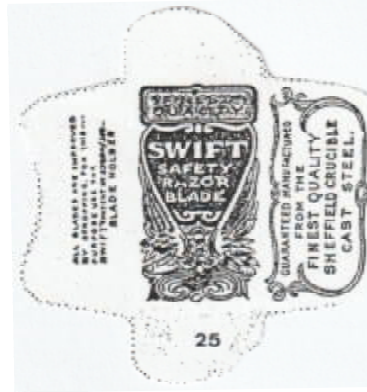
**SWELL**



001

S 003

**SWIFT**



001

S 025

**SWIFTSURE**



001

S 020

**SWORD of ARABY**



001

EXPORT TO EGYPT



**SWORD of ARABY**



SWEDEN

EXPORT TO EGYPT



**SWORD of ARABY**



USA

EXPORT TO EGYPT

