

SP



SPEAR



SPEAR POINT



IRELAND

001

S 010

002

SPEEDWAY



SPEEDWAY



SPEEDWAY



001

S 104

002

S 102

003

S 103

SPEEDWAY



004

S 101

SPHINX



001

SPITFIRE



001

S 027

INFO:
pictured is colour copy, not real blade!

Sport



001

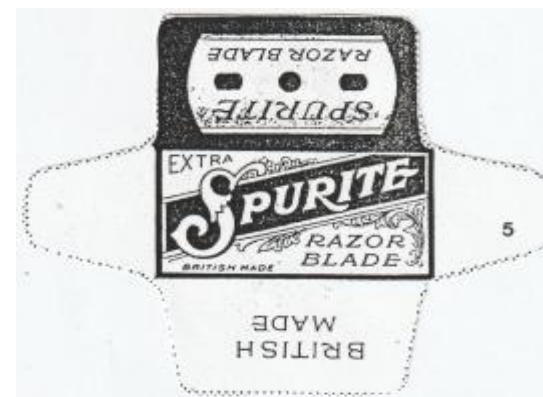
"SPORTSMAN"



001

S 004

SPURITE



001

S 005

SQUARE DEAL



001

S 026

STABLE



001

S 042

THE "STABLE"



002

S 041

STANDARD



001

S 024

STANDARD



002

STANLEY



001



STAR INFO

STAR was trade mark of Ever-Ready , may be first US razor blades (single edge) manufactureR ever.

STAR



001

S 166

STAR



002

Star was produced in USA, Great Britain, Canada, Sweden and Turkey

STAR



003

STAR



004

S 168

STAR



005

S 170

STAR



006

S 171

STAR



007

S 167

STAR



008

S 169



STAR



009

STAR



010

S 173

STAR



011

S 172



STAR



012

S 174

STAR



USA

STAR



013

S 176



STAR



014

S 175

STAR



015

STAR



TURKEY (ON LICENCE)



STAR



TURKEY (FAKE?)

STAR & CROSS



001

S 073

STAR & CROSS



001 SA

export to USA



STAR & CROSS



002

STAR CADET



001

S 165

EXPORT TO FRANCE

STAR CADET



USA

EXPORT TO FRANCE

STAR CADET



USA

EXPORT TO FRANCE

STEAD



001

S 085

STEAD



002

STEAD



003

S 084

STEAD



004

STEAD



005

S 080

STEAD



006

S 083

STEAD



007

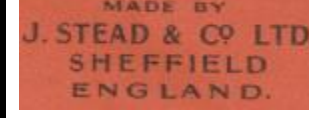
S 081

STEAD



008

S 082



STEAD



009

STEAD



010

STECO



001

S 017



STEDE



001

BRITISH STERLING



TRANSFERRED TO B

STESCO-GLYDER



001

STIMULUS



001

ST. LEGER



001

S 092

ST. LEGER



002

S 093



ST. LEGER



003

S 094

ST. LEGER



004

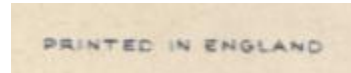
S 095

ST. LEGER



005

S 097



STREAMLINE



001

S 035

STREAMLINE



002

S 036

STREAMLINE



003

SUPA



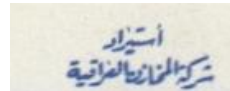
001

S 014

Super Glide



001



Super Glide



002

S 045

Super Glide



003

S 044

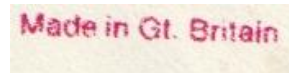


Super Glide



004

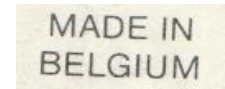
S 043



Super Glide



BELGIUM



Super Glide



BELGIUM

Super Glide



ITALY

Super S Blade



001

SUPER SHARP



001

S 046

SUPER SILVER INFO

GILLETTE proved to buy Wilkinson. First two SUPER SILVER blades are made by Wilkinson in this period. Antitrust office stopped this acquisition (at this moment).

SUPER SILVER



001

SUPER SILVER



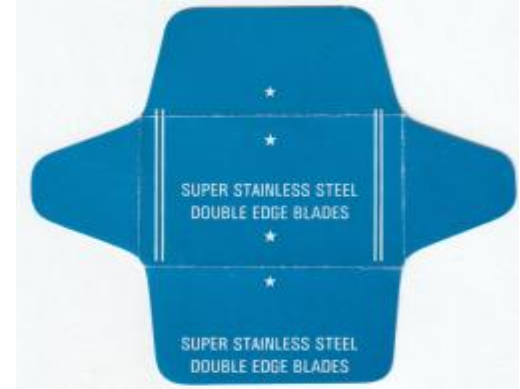
002

SUPER SILVER



003

SUPER STAINLESS STEEL



it is not sure if this is England

on blade "PERMA -made in Scotland"

SUPER STAINLESS STEEL St Mark



001

S 048

SWAN



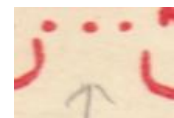
001

SWAN



002

S 109



SWAN



003

SWAN



004

S 108

SWAN



005

S 110

The SWAN



SWAN

SWAN (ADV)

ADVERTISEMENT



006

S 107



007



007

THIS PATENT BLADE IS DESIGNED TO FIT THE USUAL SINGLE EDGE HOLDERS

"SWANEE"

"SWANEE"

Sweet & Lovely



001

S 013

002

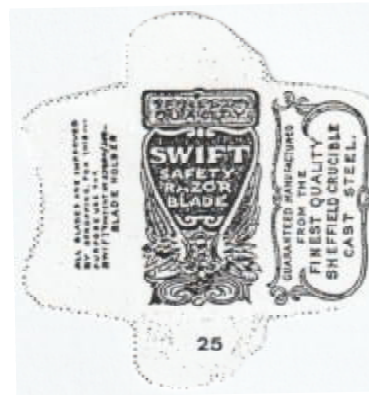
001

S 028

SWELL

SWIFT

SWIFTSURE



001

S 003

001

S 025

001

S 020

SWORD of ARABY

SWORD of ARABY

SWORD of ARABY



002

001

SWEDEN

EXPORT TO EGYPT



EXPORT TO EGYPT



SWORD of ARABY



USA

EXPORT TO EGYPT

