

Wanie



001

W 090



Wanie



002

W 091



Wanie



003

W 088



Wanie



004

W 089



Wanie



005

W 087



Wanie



006



Wanie



WW II TIME
007



Wanie



GERMANY



Wanie



GERMANY



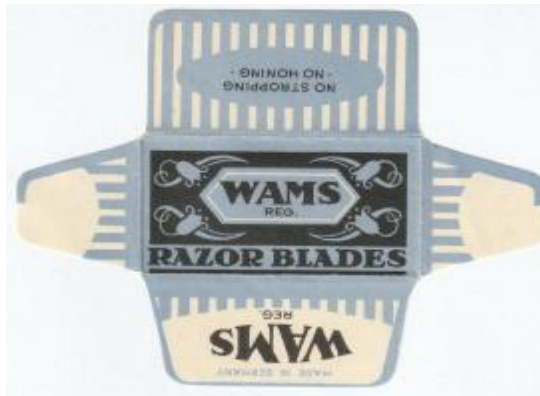
WARMS



001



WAMS



GERMANY

WARMS blade's graphic is just like German WAMS blades



WATERMAN



001

W 015



WATERMAN



002

W 014



WATERMAN



003



WATERMAN



IRELAND

WATMON



001

WATTS



001

W 009

WATTS BLADE text on red



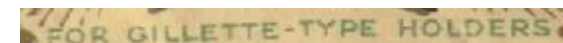
WATTS



002

W 010

WATTS BLADE text on red



WATTS (STAMP)

STAMP EXAMPLE

WATTS (STAMP)



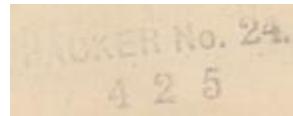
003 W 008

003

003-PA

inside stamps with packer's number

inside FIRM stamp



FIRM STAMP

WATTS (STAMP)

STAMP EXAMPLE



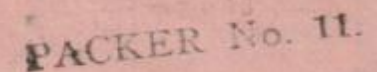
003-PA

004

W 005

004

MIRROR BLADE



WATTS



005

W 006

MIRROR BLADE

WATTS



006

W 007

MIRROR BLADE

WATTS



007

W 003

MIRROR BLADE

WATTS



008

W 002

WATTS BLADE

WATTS (STAMP)



009

W 004

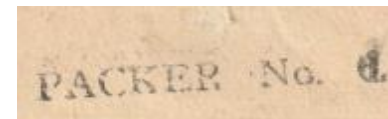
inside stamps with packer's number

WATTS-SERVICE BLADE

STAMP EXAMPLE



009



WATTS (STAMP)



010

W 011

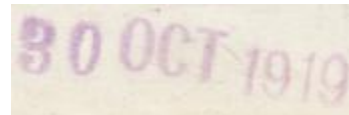
inside stamps with packer's number and (or) date

WATTS BLADE

STAMP EXAMPLE



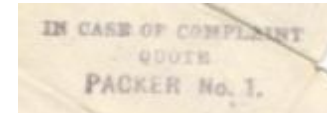
010



STAMP EXAMPLE



010



WATTS (STAMP)



011

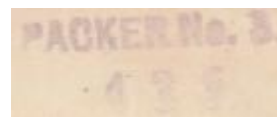
W 001

"A.S." TYPE

STAMP EXAMPLE



011



W.D & H.O. WILLS



001

W 037

WELLWORTH



001

W 092

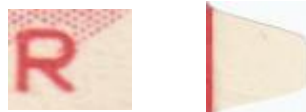


WELMET



001

W 016

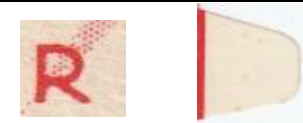


WELMET



002

W 017



WELMET



003

W 018



WELMET



004



WEST END



001

W 035



WEST END



002

W 036



WEST END



003

W 034



WEST END



004

W 033

WEST END



005

W 032

WEST END



GERMANY



WESTMERE



001

W 020

WESTMINSTER



114

001

W 114

WESTMORLAND



001

W 013

WHITE ROSE



001

Wide-Press



001

W 042

Wide-Press



002

W 043

Wide-Press



003

W 040

BRITISH MADE
REGD. NO. 542479.



BRITISH MADE
REGD. No 542479.



BRITISH MADE
REGD. NO. 542479.



Wide-Press (ADV)



004

W 041

ADVERTISING



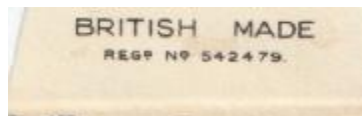
004

Wide-Press (ADV)



005

W 038



ADVERTISING



005

Wide-Press



006

W 039

"WILGO"

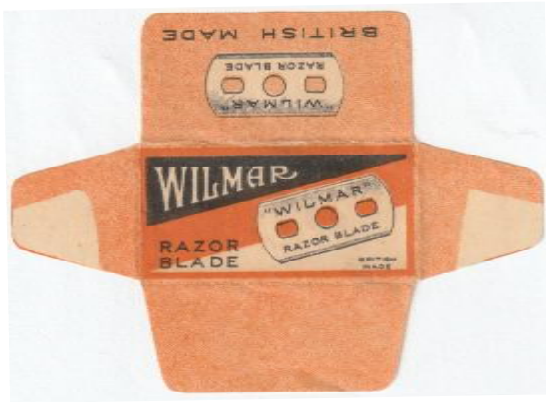


001

W 067



WILMAR



001

"WILTON"



001

Win-C-Or



001



Win-C-Or



GERMANY



Windex



001

W 052



Windex



002

W 053



Windex



003

W 054



Windex



004

W 055



Windex



005

W 056



Windex



006

Windex



007

W 051

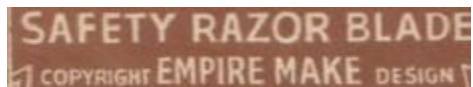


Windsor



001

W 068



Winfield



007

W 051



WINGFIELD



001

W 012

WINGFIELD



002

Winkler's



001

W 084

THE Winner



001

W 026

THE Winner



002

W 029

MADE IN SHEFFIELD UNDER
CAREFUL SUPERVISION OF
EXPERTS

THIS SUPER FLEXIBLE
WINNER BLADE IS
FULLY GUARANTEED
BY THE MAKERS



MADE IN SHEFFIELD UNDER
CAREFUL SUPERVISION OF
EXPERTS

THIS SUPER FLEXIBLE
WINNER BLADE IS
FULLY GUARANTEED
BY THE MAKERS.



THE Winner



003

W 027

MADE IN SHEFFIELD UNDER CAREFUL SUPERVISION OF EXPERTS. THIS SUPER FLEXIBLE WINNER BLADE IS FULLY GUARANTEED BY THE MAKERS.



THE Winner



004

W 031

MADE IN SHEFFIELD UNDER CAREFUL SUPERVISION OF EXPERTS. THIS SUPER FLEXIBLE WINNER BLADE IS FULLY GUARANTEED BY THE MAKERS.



THE Winner



005

W 028

MADE IN SHEFFIELD UNDER CAREFUL SUPERVISION OF EXPERTS. THIS SUPER FLEXIBLE WINNER BLADE IS FULLY GUARANTEED BY THE MAKERS.



THE Winner



006

W 030

MADE IN SHEFFIELD UNDER CAREFUL SUPERVISION OF EXPERTS. THIS SUPER FLEXIBLE WINNER BLADE IS FULLY GUARANTEED BY THE MAKERS.



Win-ota



001

W 025

WIN-OTA RAZOR BLADES B10, G1 ANGOATS ST MANCHESTER - 4

Win-ota



002

WIN-OTA RAZOR BLADES B10, G1 ANGOATS ST MANCHESTER - 4

WIN-OTA



003

W 022

BRITISH MADE



WIN-OTA



004

W 023

BRITISH MADE



WIN-OTA



005

BRITISH MADE

WIN-OTA



006

W 024



WIN-OTA



007



WIN-OTA



008

W 021

WITESAR



001

W 085

WITESAR



002

W 086

WITESAR



003



WITESAR



GERMANY



WLCOM



W. MARSHALL



001

M 001

W. Marshall



002

M 081

THE WOLF



001

W 019

"WONDER"



001

W 058

"WONDER"



002

W 059

"WONDER"



003

W 062

"WONDER"



004



"WONDER"



005

W 060



"WONDER"



006



"WONDER"



007

W 061



"WONDER"



008

W 063



"WONDER"



009

W 065



"WONDER"



010

W 064



"WONDER"



011

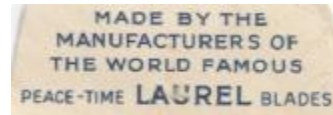
W 066



"WONDER"



012



GENUINE WONDER



013

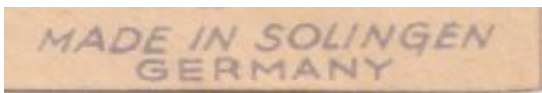
W 057



GENUINE WONDER



GERMANY



WONDER EDGE



001

W 113

WOODBINE



001

"WORLD FLYER"



001

W 044

"WORLD FLYER"



002

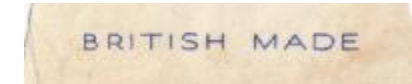
W 045

"WORLD FLYER"



003

W 046



"WORLD FLYER"



004

W 048

"WORLD FLYER"



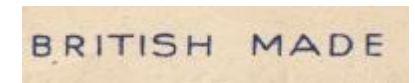
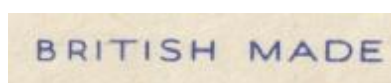
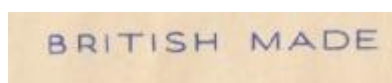
005

W 049



006

W 049



"WORLD FLYER"



007

"WORLD FLYER"



008

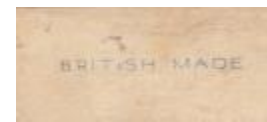
W 047

"WORLD FLYER"



009

W 050



"WORLD FLYER"



010

Wupp



001

W 112

Wupp



GERMANY

