

Wanie



001



W 090

Wanie



002



W 091

Wanie



003

W 088



Wanie



004

W 089

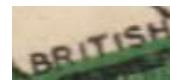


Wanie



005

W 087



Wanie



006



Wanie



WWW.HITMIL

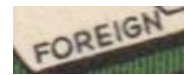
007



Wanie



GERMANY



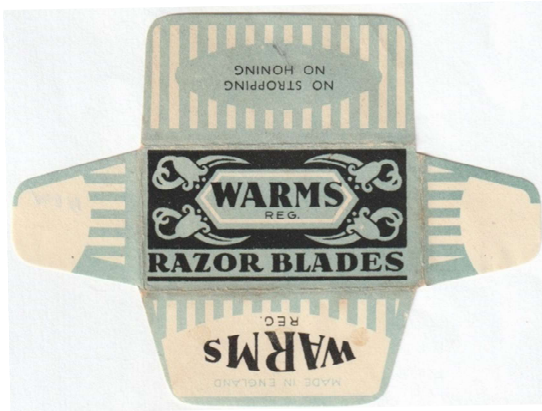
Wanie



GERMANY



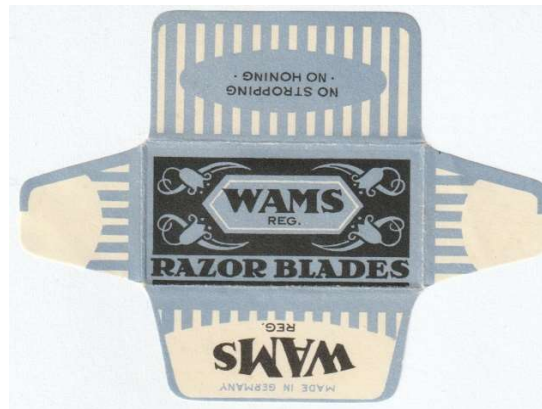
WARMS



001

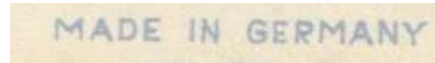


WAMS



GERMANY

WARMS blade's graphic is just like German WAMS blades

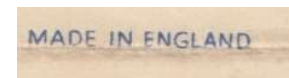


WATERMAN



001

W 015





**WATERMAN**



002

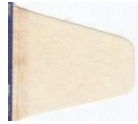
W 014



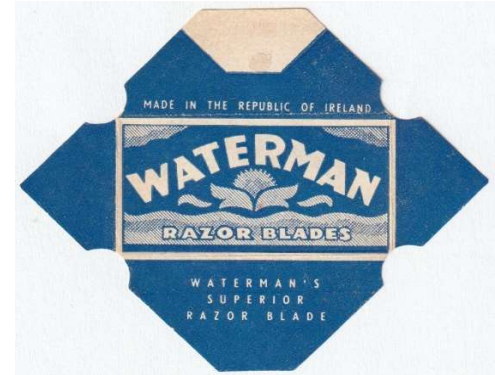
**WATERMAN**



003



**WATERMAN**



**IRELAND**

**WATMON**



001

**W.D & H.O. WILLS**



001

W 037

**WELLWORTH**



001

W 092



**WELMET**



001

W 016



**WELMET**



002

W 017

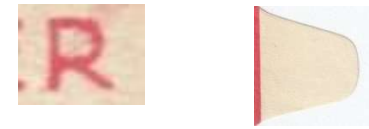


**WELMET**



003

W 018



**WELMET**



004



**WEST END**



001

W 035



**WEST END**



002

W 036





**WEST END**



003

W 034

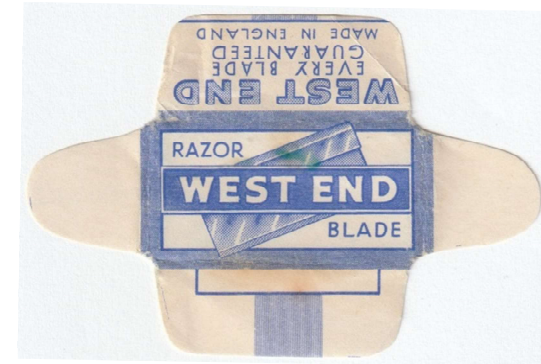
**WEST END**



004

W 033

**WEST END**



005

W 032

**WEST END**



GERMANY

Made in Germany

**WESTMERE**



001

W 020

**WESTMINSTER**



001

W 114

**WESTMORLAND**



001

W 013

**WHITE ROSE**



001

**Wide-Press**



001

W 042

**Wide-Press**



002

W 043

**Wide-Press**



003

W 040

**Wide-Press (ADV)**



004

W 041



ADVERTISING



004



Wide-Press (ADV)



005

W 038

ADVERTISING



005



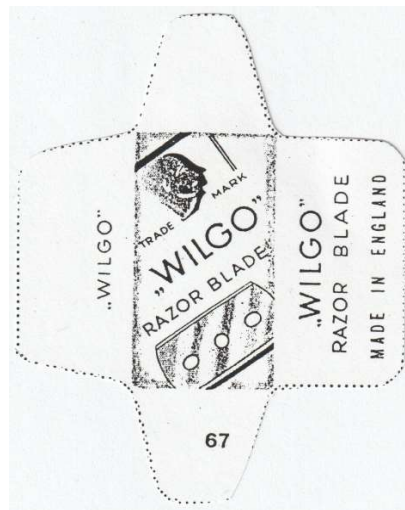
Wide-Press



006

W 039

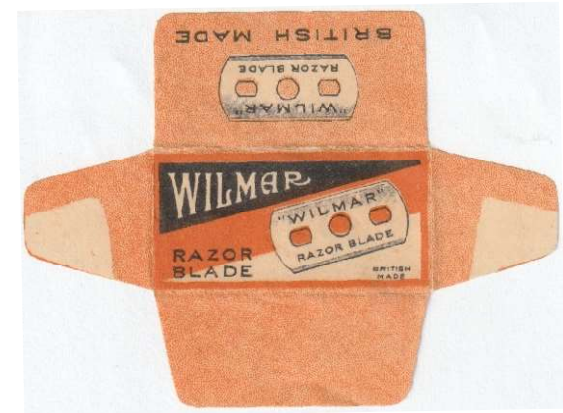
"WILGO"



001

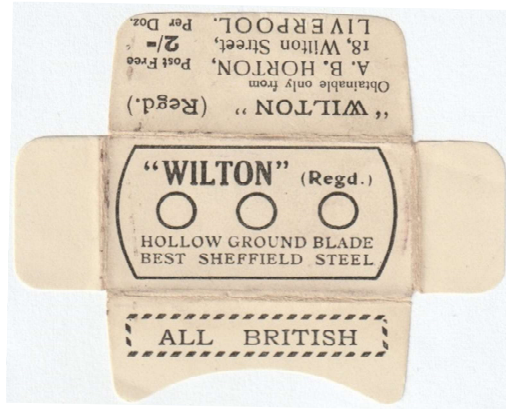
W 067

WILMAR



001

"WILTON"



001

Win-C-Or



001

Win-C-Or



GERMANY



Windex



001

W 052

Windex



002

W 053

Windex



003

W 054





Windex



004

W 055



Windex



005

W 056



Windex



006



Windex



007

W 051



Windex



008



Windex



009



**Windex**



**IRELAND**

**w w**



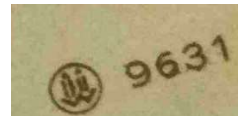
**GERMANY IMPORT**

**Windsor**



**001**

**W 068**



**Winfield**



**007**

**W 051**



**WINGFIELD ROWBOTHAM**



**001**

**W 012**

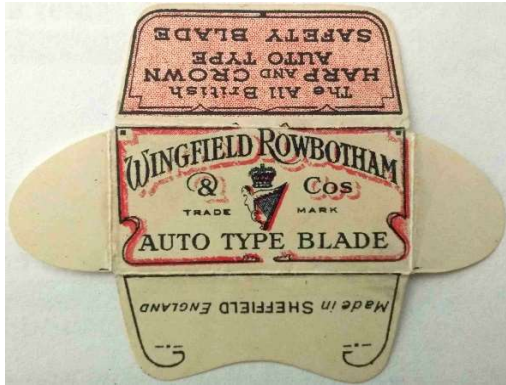
**WINGFIELD ROWBOTHAM**



**002**

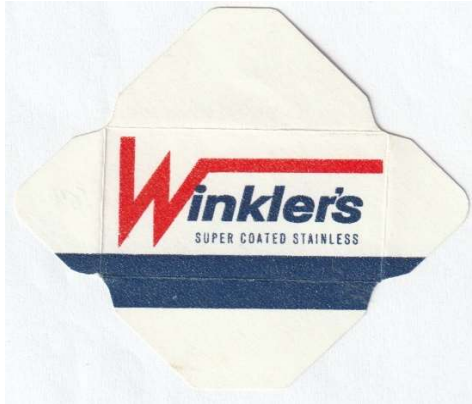


**WINGFIELD ROWBOTHAM**



003

**Winkler's**



001

W 084

**THE Winner**



001

W 026

**THE Winner**



002

W 029

**THE Winner**



003

W 027

**THE Winner**



004

W 031

THE Winner



MADE IN SHEFFIELD UNDER CAREFUL SUPERVISION OF EXPERTS.  
THIS SUPER FLEXIBLE WINNER BLADE IS FULLY GUARANTEED BY THE MAKERS.

005

W 028

THE Winner



MADE IN SHEFFIELD UNDER CAREFUL SUPERVISION OF EXPERTS.  
THIS SUPER FLEXIBLE WINNER BLADE IS FULLY GUARANTEED BY THE MAKERS.

006

W 030

Win-ota



001

W 025



Win-ota



002



WIN-OTA



003

W 022



WIN-OTA



004

W 023





WIN-OTA



005

WIN-OTA



006

W 024

WIN-OTA



007

BRITISH MADE



WIN-OTA



008

W 021

WITESAR



001

W 085

WITESAR



002

W 086

BRITISH MADE

WITESAR



003



WITESAR



GERMANY

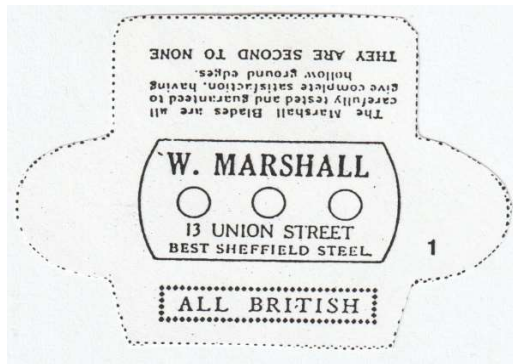


WLCOM



001

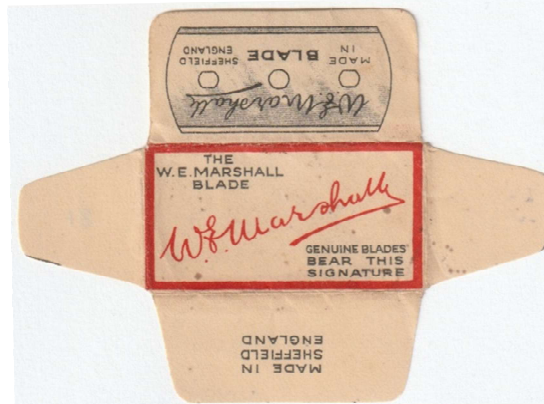
W. MARSHALL



001

M 001

W. Marshall



002

M 081

THE WOLF

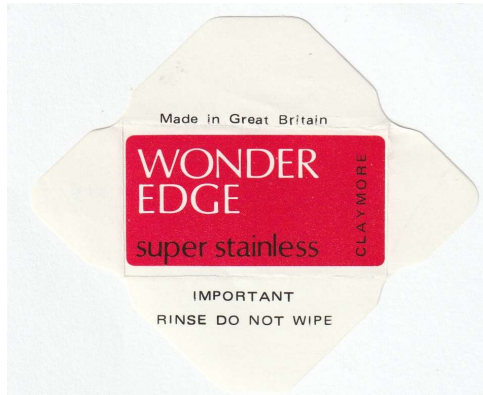


001

W 019



**WONDER EDGE**



001

W 113

**WOODBINE**



001

**"WORLD FLYER"**



001

W 044



**"WORLD FLYER"**



002

W 045

**"WORLD FLYER"**

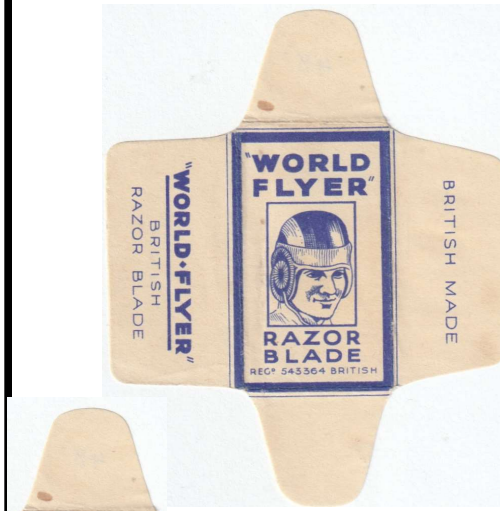


003

W 046

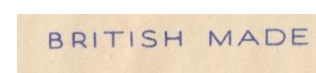


**"WORLD FLYER"**

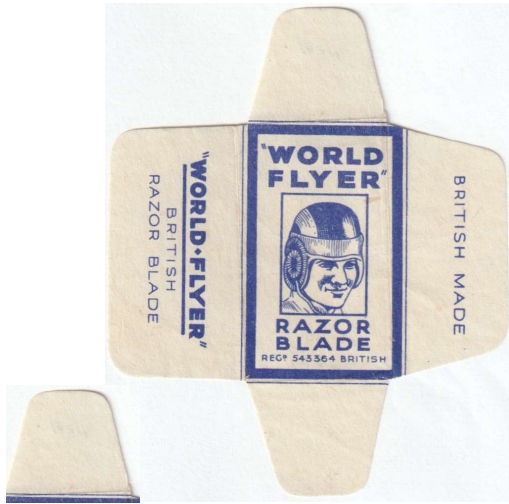


004

W 048



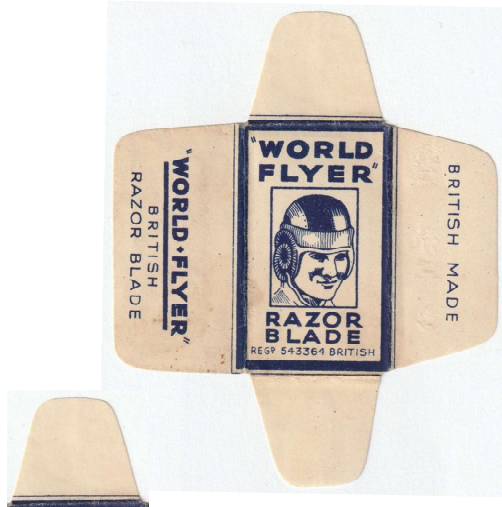
"WORLD FLYER"



BRITISH MADE

005

"WORLD FLYER"



BRITISH MADE

006

W 049

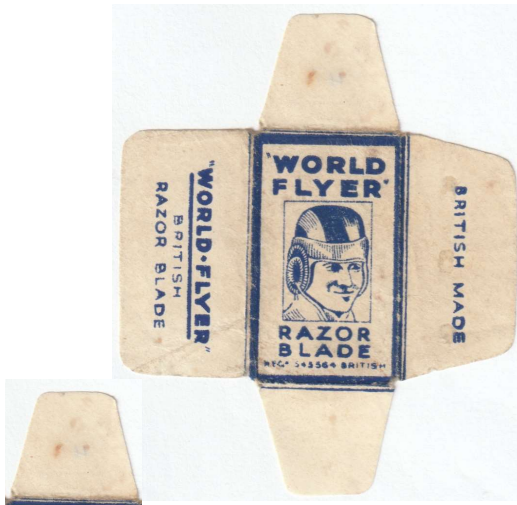
"WORLD FLYER"



BRITISH MADE

007

"WORLD FLYER"



BRITISH MADE

008

W 047

"WORLD FLYER"



BRITISH MADE

009

W 050

"WORLD FLYER"

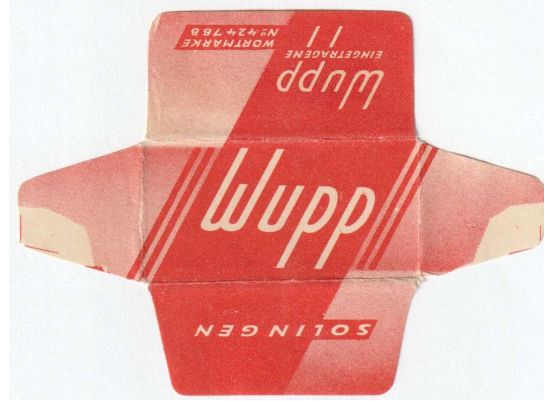
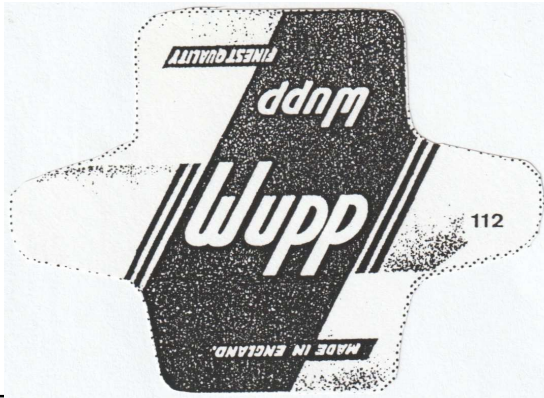


010



Wupp

Wupp



001

W 112

GERMANY

