

AA



001 (A 001)

ABA



001 (A002)

SWEDISH AIR LINES

ABA



002

LIGNES AERIENNES SUEDOISES

ABA



003 (A003)

ABC



001 (A004)

A.-B. AUG. LINDAHL



001 (L023)

ALA Hästvagnsaxlar
Skivhjul
Däck och slangar
Bult - Mutter
Maskiner och Verktyg

A.-B. AUG. LINDAHL



002 (L024)

ALA Hästvagnsaxlar
Skivhjul
Däck och slangar
Bult - Mutter
Maskiner och Verktyg

A.-B. AUG. LINDAHL



003 (L025)

Cirkelsågar
Maskinknivar
Sågverksmaskiner
Maskinförnödenheter
Elektr. Motorer

A.-B. AUG. LINDAHL



004 (L026)

FONT LIKE 002, TEXT LIKE 003

A.-B. AUG. LINDAHL



005

A.-B. SVEAEXPORT



001

ABC & HO



001

ABICO



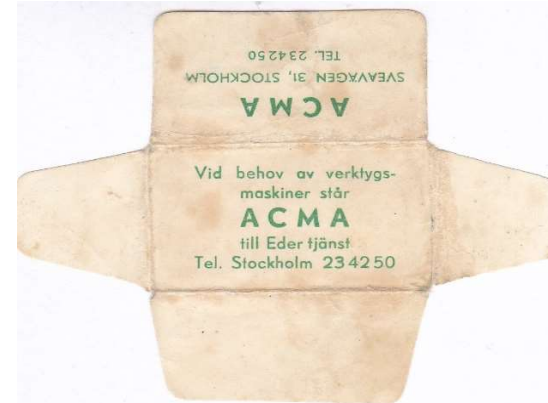
001 (A005)

ABICO



002 (A006)

ACMA



001

ACMA



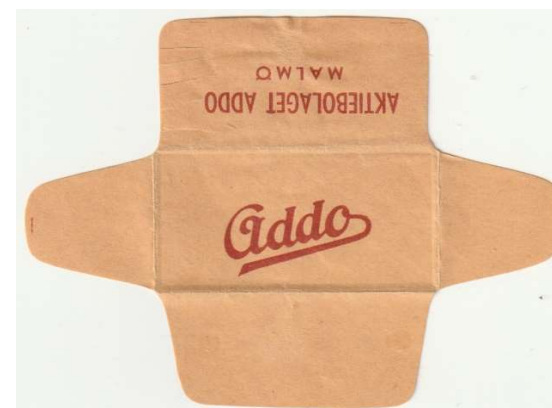
002

ADDO



001

ADDO



002

AFTONBLADET



001

AGA



001

SKARP SAK



TRANSFERRED TO S

(AGB A008)

SKARP SAK



TRANSFERRED TO S

(AGB A009)

SKARP SAK



KÖR MED CARTER
TRANSFERRED TO S

(AGB A010)

SKARP SAK



TRANSFERRED TO S

(AGB A011)

AGB



001 (A012)

AGB



002 (A013)

AGB



003 (A014)

AGB



004 (A015)

AGB



005 (A016)

AGIL



AUSTRIA

(A066)

AKLA



001 (A017)

AKLA



002

AKLA



IMPORT GERMANY

(A018)

AKLA



IMPORT GERMANY

AKLA



003 (A019)

AKLA



004 (A020)

AKTIEBOLAGET SLIPMATERIAL



001 (S132)

MÅNSKA LIT. A.B. MALMÖ

AKTIEBOLAGET SLIPMATERIAL



002

[Blank label]

AKTIEBOLAGET SLIPMATERIAL



003

MÅNSKA LIT. A.B. MALMÖ

VÄSTERVIK

AKTIEBOLAGET SLIPMATERIAL



004

MÅNSKA LIT. A.B. MALMÖ

VÄSTERVIK

AKTIEBOLAGET SLIPMATERIAL



005 (S133)

D

slipskivor.

AKTIEBOLAGET SLIPMATERIAL

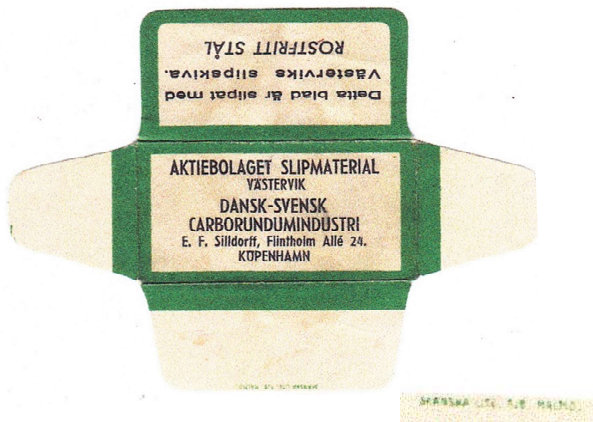


006

D

slipskiva.

AKTIEBOLAGET SLIPMATERIAL



007

slipskiva.

ALFA



001 (A021)

ALFA



002

ALFA



003

ALLTIVASS



001 (A022)

ALLTIVASS



GERMANY

(A023)

ALLTIVASS



ALLTIVASS



ALPA

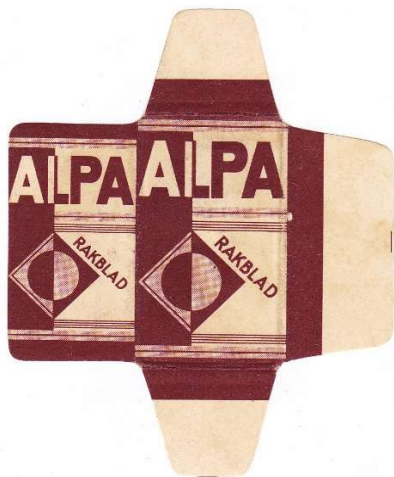


GERMANY

002 (A024)

001 (A025)

ALPA



ALRITE



ALRITE



002 (A026)

001 (A027)

002

ALRITE



003

ALRITE



004 (A028)

ALRITE



005

ALTMISALTI



001 (A029)

0,08

ALTMISALTI



002 (A030)

0,10

AMBASSADEUR



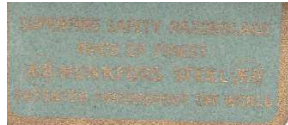
001 (A031)

ANCHOR



001 (A032)

MUNKFORS STEEL
TROUGHTOUT THE WORLD



ANCHOR



002 (A033)

MUNKFORS STEEL
PATENTED
LIGHT BLUE

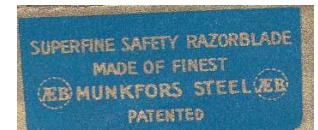


ANCHOR



003 (A034)

MUNKFORS STEEL
PATENTED
BLUE



ANCHOR



004 (A035)

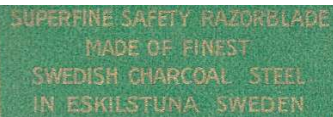
UDDEHOLM STEEL
PATENTED



ANCHOR



005 (A036)



ANCHOR



006 (A037)

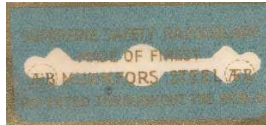


ANCHOR



007 (A038)

MUNKFORS STEEL
PATENTED THROUGHOUT
THE WORLD

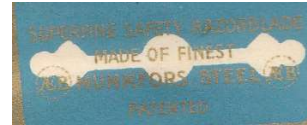


ANCHOR



008 (A039)

MUNKFORS STEEL
PATENTED
LIGHT BLUE



ANCHOR



009 (A040)

MUNKFORS STEEL
PATENTED
BLUE



ANCHOR



010 (A041)

UDDEHOLM STEEL
PATENTED



ANCHOR



011 (A042)

UDDEHOLM STEEL
PATENTED



ANCHOR



012 (A043)

UDDEHOLM STEEL
PATENTED



ANCHOR



013 (A044)

ANCHOR



014 (A045)

ANCHOR



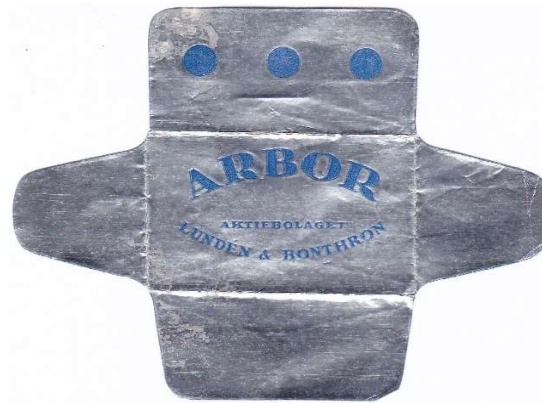
015 (A046)

APOTEKARENS



001 (A047)

ARBOR



001

ARBOR

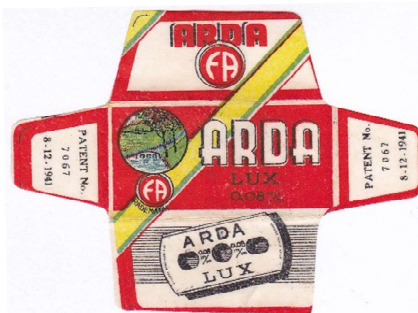


002

ARDA



ARDA



HOTELL ARKADEN



TURKEY - FAKE

TURKEY - FAKE

TRANSFERRED TO H

MADE IN SWEDEN

(A048)

ASKOL

ASKOL

ASKOL



001 (A049)

002 (A050)

003

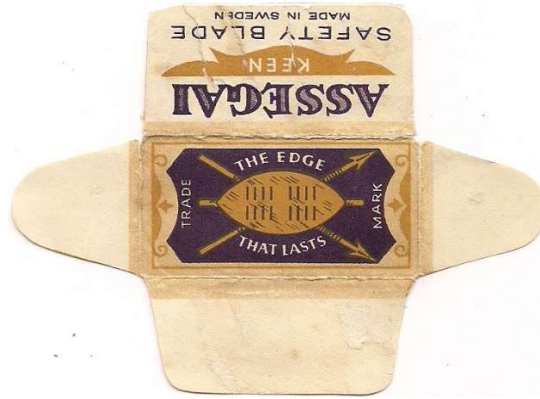


ASSAB



001 (A051)

ASSEGAI



001

A-STÅL



001 (A052)

ATLANTIC



001 (A053)



ATLANTIC



002



ATLANTIC



003 (A054)

ATLANTIC



004 (A055)

ATLANTIC



005 (A056)

ATLANTIC



006 (A057)

ATLANTICO



001 (A058)

ATLANTICO



002 (A059)

ATLAS COPCO



001

ATLAS DIESEL



001

ATOMICA



001 (A060)

ATOMICA



INDIE

ATOMICA



USA

AUTO-RAZO



001 (A061)

AVEKA



001 EXPORT TO HOLLAND

AVESTA



STICKER GLUED TO PLASTIC DISPENSER

(A062)

AXACO



001 (A063)

AXEL WIKLUND & CO



001 (W015)

AZUL



001 (A064)

AZUL



002

AZUL ROMANA



003 (A065)