

POPULÄR



001 (SW001)

POPULÄR

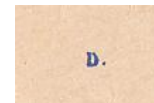
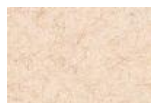
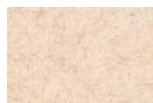


002 (SW002)

POPULÄR



003



POPULÄR



004 (SW003)

POPULÄR



005 (SW004)

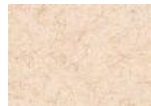
POPULÄR



006



D.



D.



POPULÄR



007 (SW005)



POPULÄR



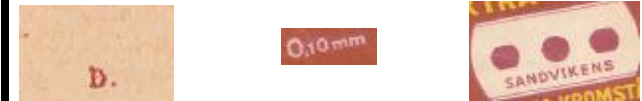
008



POPULÄR



009



POPULÄR



010 (SW007)



POPULÄR



011 (SW008)



POPULÄR



012 (SW009)



POPULÄR



013 (SW006)



EXTRA QUALITY



014 (SW010)



SPECIAL



015 (SW011)



SPECIAL



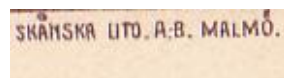
016 (SW012)



SPECIAL



017 (SW014)



SPECIAL



018 (SW013)



ROSTFRI (A)



019 (SW015)

ADVERT A



019

ROSTFRI



020 (SW016)

D.



GEBRUIKSAANWIJZING

SWING-mesjes (Rostfri)

D.

0.10



ROSTFRI (F)



020A

ADVERT F



020A

ROSTFRI



021 (SW020)

D.

0,10

GEBRUIKSAANWIJZING

SWING-mesjes (Rostfri)

D.



ROSTFRI (A)



022



0,13



ADVERT A



022

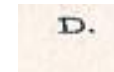
GEBRUIKSAANWIJZING

SWING-mesjes (Rostfri)

ROSTFRI (F)



022A



0,13



ADVERT F



022A

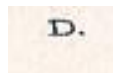
GEBRUIKSAANWIJZING

SWING-mesjes (Rostfri)

ROSTFRI



023 (SW021)



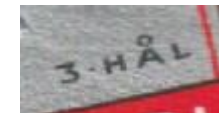
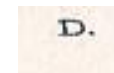
0,13



ROSTFRI



023A



STAINLESS



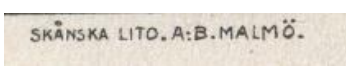
024 (SW017)



STAINLESS



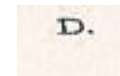
024A



STAINLESS



025 (SW018)



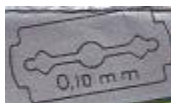
STAINLESS



026



0,10 mm



STAINLESS



026A



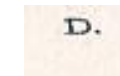
0,13 mm



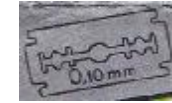
STAINLESS



027



0,10 mm



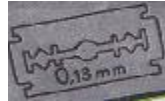
STAINLESS



028 (SW019)



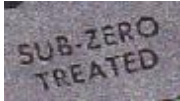
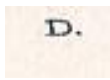
0,13 mm



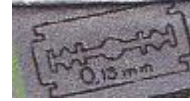
STAINLESS



029



0,13 mm



STAINLESS



030

GENUINE SWEDISH STEEL AND MANUFACTURE USED IN SWING SAFETY RAZOR A SUPERIOR SHAVE.

COLD TREATED STEEL



STAINLESS



030A

COLD TREATED STEEL



STAINLESS



031



STAINLESS



032



STAINLESS



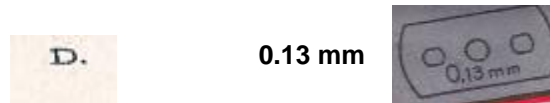
033



STAINLESS



034



INOXIDABLE



035



INOXIDABLE



036



INOXIDABLE



037



INOXIDABLE



038



15



039 (SW022)

15

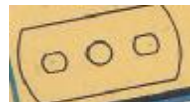


040 (SW023)

15



041 (SW024)



25



042 (SW025)

25



042-PA

25



043

SKÅNSKA LITO. A:B. MALMÖ.

SKÅNSKA LITO. A:B. MALMÖ.

STAMP GRATISBLAD



SKÅNSKA LITO. A:B. MALMÖ.

0.06 mm

25



044 (SW026)

25

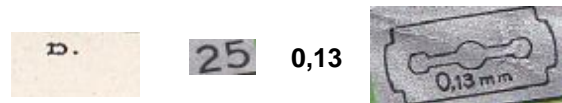
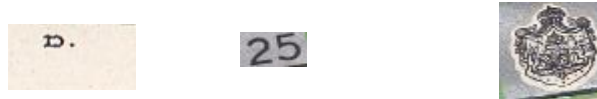


045 (SW027)

25



046 (SW028)



25



047 (SW029)

25



048 (SW030)

25 (A)



049



ADVERT A



GEBRUIKSAANWIJZING
SWING-mesjes (Rostfri)
roosten niet en is afdragen niet meer nodig. Bovendien gaan in- en uit elkaar draaien van het apparaat meer; dit is het scheren alleen. Het is los draaien en spoelen; bij volgende scheerbeurt alleen weer even vast draaien.

049

25



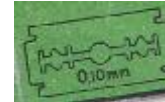
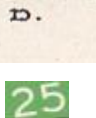
050 (SW031)

25



051 (SW032)

GEBRUIKSAANWIJZING
SWING-mesjes (Rostfri)



25

25

25 (B)



052 (SW033)



053 (SW034)



054



25

ALLTIGENOM SVENSKT
KVALITETSARBETE.
GER MED SWING RAK-
HYVEL TOPPRESULTAT.



25



25



ADVERT B



054

30



055 (SW035)

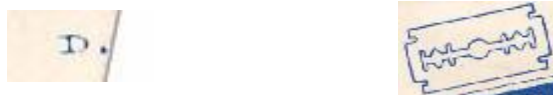
30



056 (SW036)

GEBRUIKSAANWIJZING
SWING-mesjes (Rostfri)

30



30



058 (SW038)

0,10 mm



30

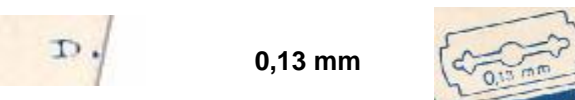


059 (SW039)



057 (SW037)

0,13 mm



30



060 (SW040)



30



061 (SW041)



30



062 (SW042)



30



063



40



063A



40



064 (SW044)



40



065 (SW043)



40 (A)



066



ADVERT A



066



40



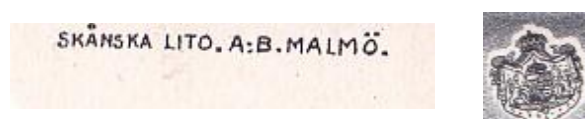
067 (SW045)



40



068 (SW046)



40



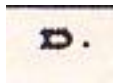
068-PA



40



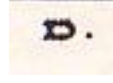
069 (SW047)



40 (A)



069A



ADVERT A



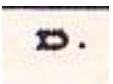
069A



40



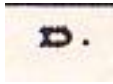
070 (SW048)



40



071 (SW049)



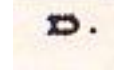
0.13 mm



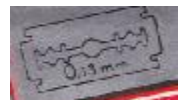
40



072 (SW050)



0.13 mm



40



073 (SW051)

40



073-PA

40

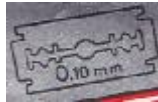


074 (SW052)

D.



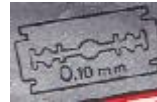
0.10 mm



D.



0.10 mm



40



075 (SW053)

40



076 (SW054)

40



077 (SW055)

D.



40 (B)



078 (SW056)

ADVERT B



078

40



078A



GEBRUIKSAANWIJZING
SWING-mesjes (Rosifri)



40



079 (SW057)

40 (B)



080 (SW058)

ADVERT B



080



GEBRUIKSAANWIJZING
SWING-mesjes (Rosifri)

40



081



40 (B)



082



ADVERT B



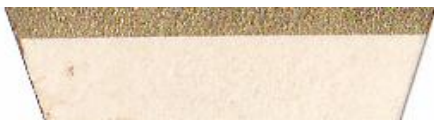
082



40



083 (SW059)



40



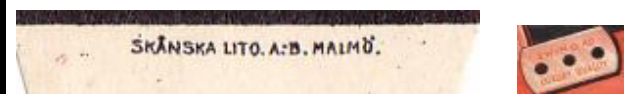
084



40



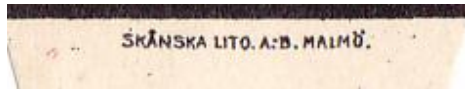
085 (SW060)



40



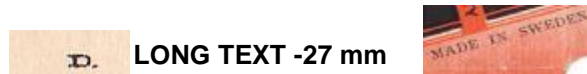
086 (SW061)



40



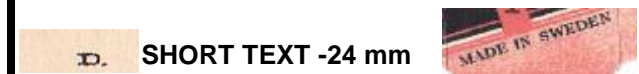
087



40



088



S



089 (SW062)



S



090 (SW063)



ECONOMIC



091 (SW064)



ECONOMIC



092 (SW065)



ECONOMIC



093



ECONOMIC



094



ECONOMIC



095



ECONOMIC



096



30 ASR



097 (SW066)



30 ASR



098 (SW067)

30 ASR



099 (SW068)

30 ASR



099-PA



GRATISBLAD

30 ASR



100

ASR



101 (069)

ASR



102



ASR



103 (SW070)



ASR



104 (071)



ASR



105 (072)



ASR



106 (073)



ASR (C)



107

ADVERT C



107



ASR (D)



108

ADVERT D



108

ASR (F)



108



ADVERT F



108

ASR (E)

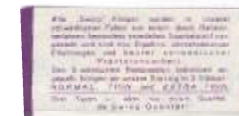


109

ADVERT E



109



POPULAR



110

SWING



111 (SW083)

SWING



111A

SWING



112 (074)

SWING



113 (075)

SWING



114

SPECIAL ASR



115 (SW077)



SPECIAL ASR



116 (SW078)



SPECIAL ASR



117 (SW079)



SPECIAL ASR



118 (SW080)



SPECIAL ASR



119 (SW081)



STAINLESS

STAINLESS



120 (SW082)



STAINLESS

SWING



GERMANY