

POPULÄR



001 (SW001)

POPULÄR



002 (SW002)

POPULÄR



003



POPULÄR



004 (SW003)

POPULÄR

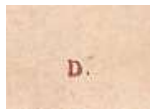


005 (SW004)

POPULÄR



006



POPULÄR



007 (SW005)



POPULÄR



008



POPULÄR



009



POPULÄR



010 (SW007)



POPULÄR



011 (SW008)



POPULÄR



012 (SW009)



POPULÄR



013 (SW006)

MADE IN SWEDEN

EXTRA QUALITY



014 (SW010)



SPECIAL



015 (SW011)



SPECIAL



016 (SW012)



SPECIAL



017 (SW014)

SKANSKA LITO. A.B. MALMÖ.



SPECIAL



018 (SW013)



ROSTFRI (A)



019 (SW015)

ADVERT A



019

ROSTFRI



020 (SW016)

D.



GEBRUIKSAANWIJZING

SWING-mesjes (Rostfri)

D.

0.10



ROSTFRI (F)



020A

ADVERT F



020A

ROSTFRI



021 (SW020)

D.

0,10

GEBRUIKSAANWIJZING

SWING-mesjes (Rostfri)

D.



ROSTFRI (A)



022

D.

0,13



ADVERT A



022

GEBRUIKSAANWIJZING

SWING-mesjes (Rostfri)

ROSTFRI (F)



022A

D.

0,13



ADVERT F



022A

GEBRUIKSAANWIJZING

SWING-mesjes (Rostfri)

ROSTFRI



023 (SW021)

D.

0,13

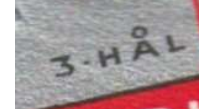


ROSTFRI



023A

D.



STAINLESS



024 (SW017)

STAINLESS

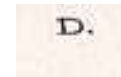
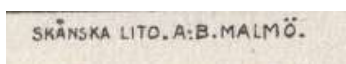


024A

STAINLESS



025 (SW018)



STAINLESS



026

STAINLESS



026A

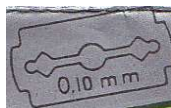
STAINLESS



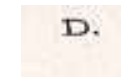
027



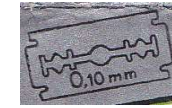
0,10 mm



0,13 mm



0,10 mm



STAINLESS



028 (SW019)

STAINLESS



029

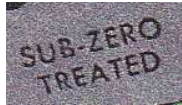
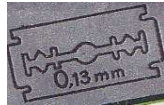
STAINLESS



030



0,13 mm



0,13 mm



GENUINE SWEDISH STEEL
AND MANUFACTURE. USED
IN SWING SAFETY RAZOR
A SUPERIOR SHAVE.

COLD TREATED STEEL



STAINLESS



030A

STAINLESS



031

STAINLESS



032

COLD TREATED STEEL



STAINLESS



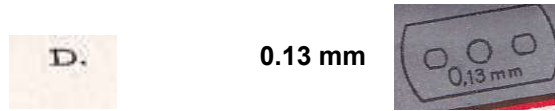
033



STAINLESS



034



INOXIDABLE



035



INOXIDABLE



036



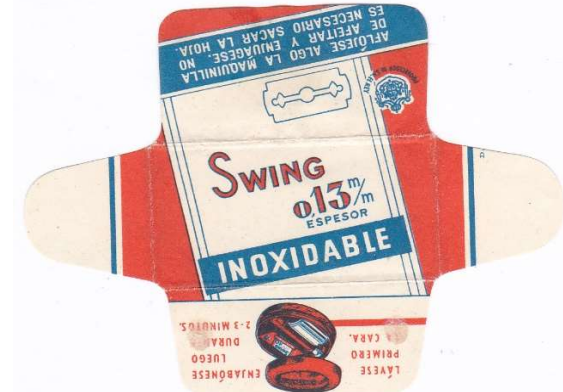
INOXIDABLE



037



INOXIDABLE



038



15



039 (SW022)

15

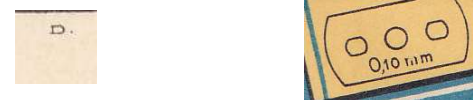


040 (SW023)

15



041 (SW024)



25



042 (SW025)

25



042-PA

25



043

SKÅNSKA LITO. A. B. MALMÖ.

SKÅNSKA LITO. A. B. MALMÖ.

STAMP GRATISBLAD



SKÅNSKA LITO. A. B. MALMÖ.

0.06 mm

25



044 (SW026)

25



045 (SW027)

25



046 (SW028)

D.

25



D.

25

0,13



D.

25



25



047 (SW029)

25



048 (SW030)

25 (A)



049

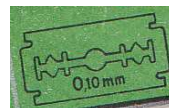
D.

25



D.

25



D.

25



ADVERT A



049

25



050 (SW031)

25



051 (SW032)

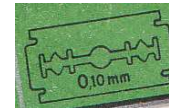
GEBRUIKSAANWIJZING

SWING-mesjes (Rostfri)

25

D.

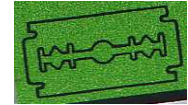
25



25

D.

25



25 (B)



052 (SW033)



053 (SW034)



054



25

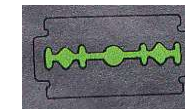
ALLTIGENOM SVENSKT KVALITETSARBETE. GER MED SWING RAKHYVEL TOPPRESULTAT.



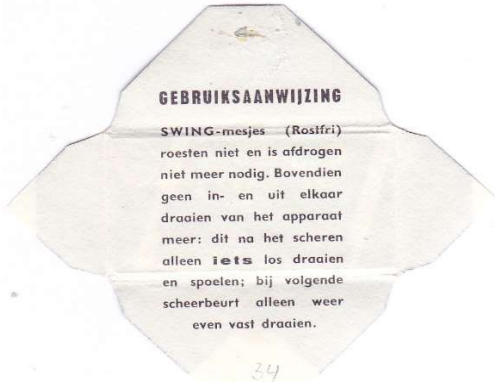
25



25



ADVERT B



054

30



055 (SW035)

30



056 (SW036)

GEBRUIKSAANWIJZING

SWING-mesjes (Rostfri)

30



30



058 (SW038)

30



059 (SW039)



057 (SW037)



0,13 mm



30



060 (SW040)

30

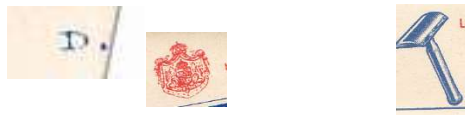


061 (SW041)

30



062 (SW042)



30



063

40



063A

40



064 (SW044)



40



065 (SW043)

40 (A)



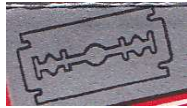
066

ADVERT A

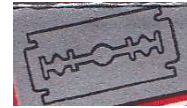


066

D.



D.



GEBRUIKSAANWIJZING

SWING-mesjes (Rostfri)

40



067 (SW045)

40



068 (SW046)

40



068-PA

D.



SKÅNSKA LITO. A.B. MALMÖ.



40



069 (SW047)



40 (A)



069A



ADVERT A



069A



40



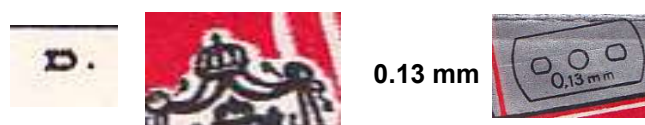
070 (SW048)



40



071 (SW049)



40



072 (SW050)



40



073 (SW051)



0.10 mm



40



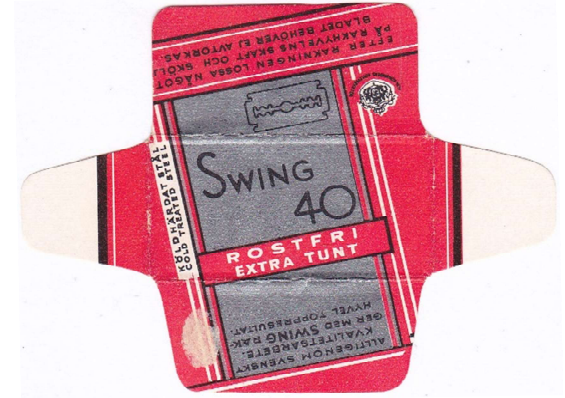
073-PA



0.10 mm



40



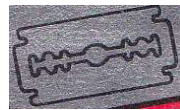
074 (SW052)



40



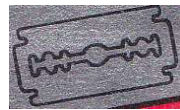
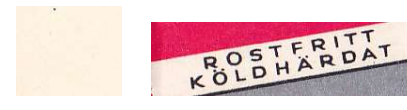
075 (SW053)



40



076 (SW054)



40



077 (SW055)

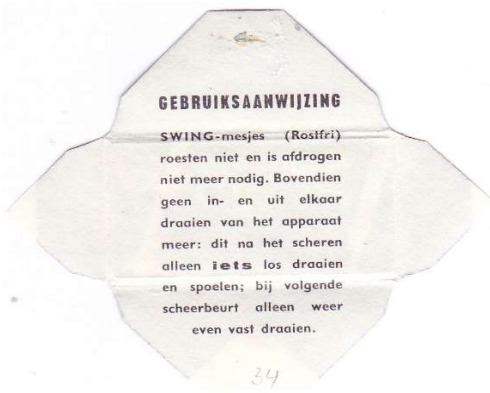


40 (B)



078 (SW056)

ADVERT B



078

40



078A



GEBRUIKSAANWIJZING
SWING-mesjes (Rostfri)



40



079 (SW057)

40 (B)



080 (SW058)

ADVERT B



080



GEBRUIKSAANWIJZING
SWING-mesjes (Rostfri)

40



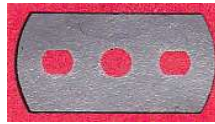
081



40 (B)



082



ADVERT B



082

GEBRUIKSAANWIJZING
SWING-mesjes (Rostfri)

40



083 (SW059)



40



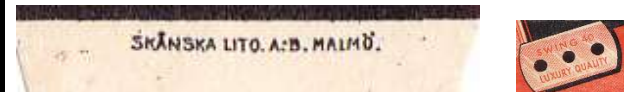
084

SHÅNSKA LITO. AB. MALMÖ.

40



085 (SW060)



GEBRUIKSAANWIJZING

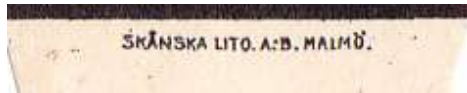
SWING-mesjes (Rostfri)
roesten niet en is afdrogen
niet meer nodig. Bovendien
geen in- en uit elkaar
draaien van het apparaat
meer: dit na het scheren
alleen iets los draaien
en spoelen; bij volgende
scheerbeurt alleen weer
even vast draaien.

34

40



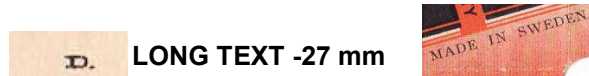
086 (SW061)



40



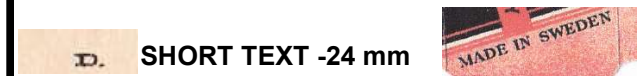
087



40



088



S



089 (SW062)



S



090 (SW063)



ECONOMIC



091 (SW064)



ECONOMIC



092 (SW065)



ECONOMIC



093



ECONOMIC



094



ECONOMIC



095



ECONOMIC



096



30 ASR



097 (SW066)



30 ASR



098 (SW067)

30 ASR



099 (SW068)

30 ASR



099-PA GRATISBLAD

30 ASR



100

ASR



101 (069)

ASR



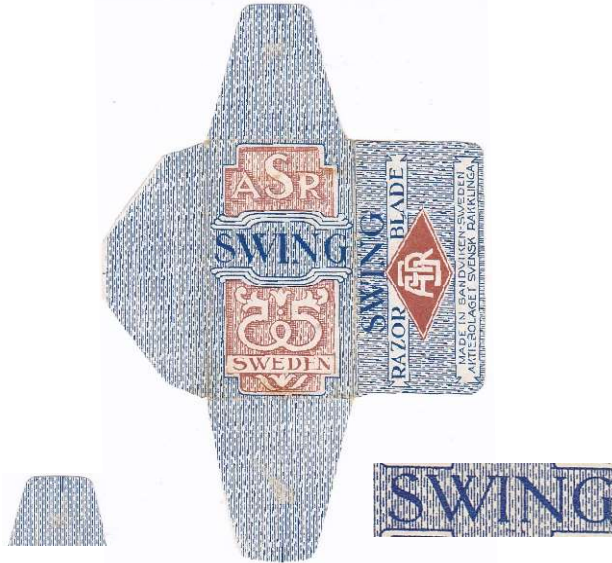
102

ASR



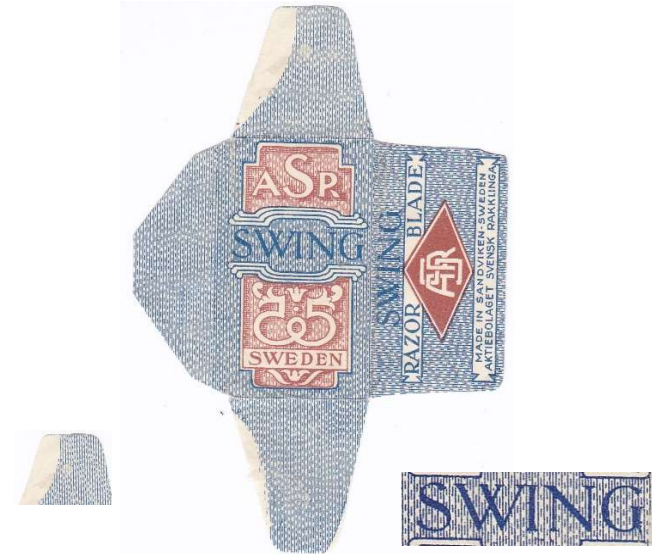
103 (SW070)

ASR



104 (071)

ASR



105 (072)

ASR



106 (073)

ASR (C)



107

ADVERT C



107

Alle „Swing“-Klingen werden in unserer schwedischen Fabrik aus einem durch Geheimverfahren besonders veredelten Spezialstahl hergestellt und sind das Ergebnis jahrzehntelanger Erfahrung und bester schwedischer Präzisionsarbeit.
Laut Gutachten der schwedischen Handelskammer ist unsere „Swing“-Klinge die meistverbreitete schwedische Weltmarke.
„SWING“
ist die Klinge in ihrer höchsten Vollendung!

ASR (D)



108

ADVERT D



108



ASR (F)



108

ADVERT F



108



ASR (E)



109

ADVERT E



109



POPULAR



110

SWING



111 (SW083)

SWING



111A

SWING



112 (074)

SWING



113 (075)

SWING



114

SPECIAL ASR



115 (SW077)

SPECIAL ASR



116 (SW078)

SPECIAL ASR



117 (SW079)

SPECIAL ASR



118 (SW080)

SPECIAL ASR



119 (SW081)



STAINLESS

STAINLESS



120 (SW082)



STAINLESS

SWING



GERMANY